

Midmar Newsletter

Published by the hall committee on
behalf of the Midmar community
Autumn Edition
Issue 43—Autumn 2021





School restarted on 16th August and we were delighted to welcome four children to Primary 1. They have all settled in well and are enjoying being in school.

Portacabin / 'Hut'

Many of you will have noticed that the 'Hut' has been removed from the front playground. This was because our roll has dropped and it was no longer required as a classroom. We now have a lovely piece of extra playground which will be developed in time.



School Grounds and Community Millennium Garden

We are especially grateful to our families who volunteered to water our planters, raised beds and greenhouse produce over the summer. The hot weather made the job even bigger! However, the garden is looking beautiful and this week we harvested out potatoes, peas and onions. We will be cooking with them next week. Over the summer we had

blackcurrants, gooseberries and strawberries. We encouraged the community to come and pick them so they didn't go to waste. Still to ripen are pears and blueberries. Our tomatoes are also ripening well now and we have at least 7 sweet corn cobs to pick. Unfortunately, the frost got our plum and apple blossom so there are very few to pick.

We are also grateful to Beth



Smith who shared some of the flowers from the Hall. Finally, we would like to thank Jim Allan and Nigel Bennet for cutting and strimming the grass in the Millennium Garden. A great community effort all round.

Midmar Paths

During this term children in Primary 5 – 7 and their teachers plan to walk some of the paths around Midmar. This will link P.E. and our study of the area around Midmar. This week we walked along the cleared Tillybirloch path, over the stile, through the wood and back to school via Comers. The weather was lovely and so was the countryside.



CIRCUIT TRAINING AT MIDMAR HALL Every Monday and Thursday



We have been so lucky to be able to exercise in the garden since starting back in May. We hope to continue with outdoor training for as long as we can.

Our numbers are currently from about 3 – 10 so we have plenty of space for a few more to join our super friendly group. Please be reminded that we don't take things too seriously, we just want to get fit together whilst listening to some great tunes and enjoying a few laughs. The class is run by volunteers and costs £5 on a pay as you go basis.



For any further information please call Pamela on 07833 900620



Midmar Hall 100 Club

And the winners are:

During the community café on 6th August, the first draw for the 100 club was made. Those lucky enough to be in it to win it were:

First prize - £100 – Ian Birse

Second prize - £60 – Sula Humberstone

Third prize - £30 – Sandy Simpson

Fourth prize - £25 – Jim and Jenny Begg

Get your lucky number now. Download a form from the website www.midmarhall.com or contact me through 100club@midmarhall.com. The form allows up to 5 members of each household to get a number. It costs £15 for each number and this allows you to enter into 4 draws per year. Payment should be made direct to 100 Club account – details are on the form.



Calling all Bowlers!

.....or people who would like to try indoor bowling. Alan Blackie would like to hear from you to replenish Midmar Bowlers' friendly squad. Alan's number is 833 482.

Path Improvements Glenwood – Tillybirloch

Many of you may have noticed there has been a great deal of work going on along the path from Glenwood to Tillybirloch (aka 'The Loanings'). The path provides an excellent, and safe way, for children to walk to school and a good option for those wanting to enjoy a walk without going on a road. Broom and gorse grows very quickly and despite several attempts to clear the path in the past, unfortunately it had become so overgrown that it was a real struggle to make it from one side to the other.

And so, in August, clearing work began. The aim was to allow access for all: walkers, cyclists, runners and horse riders but most importantly the school children!

I have been amazed and inspired by the number of people who turned up to clear, cut, drag and tidy up the years of accumulated overgrowth. It was heartwarming to see the local community in action, working towards a good cause. Well done to everyone who helped out in some way!

It's been brilliant to hear that the school children have already been able to use the path to get to and from school and go for walks with their class. Furthering their outdoor education and appreciation for the beautiful place where we live.

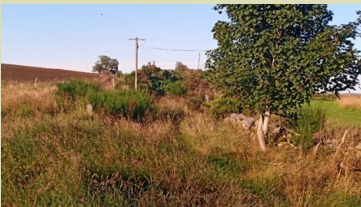
Many paths in the area don't need much maintenance as they are well-walked which keeps them open. However, some could easily be made more accessible with a trim now and then. In addition, the Comers Bridge is long overdue for some repairs. Thankfully, we have managed to secure a grant for this through the Community, and Aberdeenshire Councils. Hopefully we'll be able to get a squad together to fix this up in Autumn.

Posts with information about meet-ups for improvements will be shared on Nextdoor. Alternatively, please email rebeccajbaptie@gmail.com if you'd like to help out.

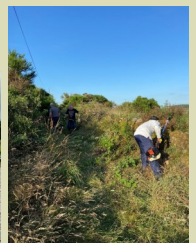
Finally, thank you again to all those that helped with the path improvements so far! Enjoy the space to be outdoors and our beautiful countryside

Becky Baptie

Pictures 1 & 2: Before and as work began, a very overgrown and prickly path!



Pictures 3-6 Some of the volunteers that came to help!



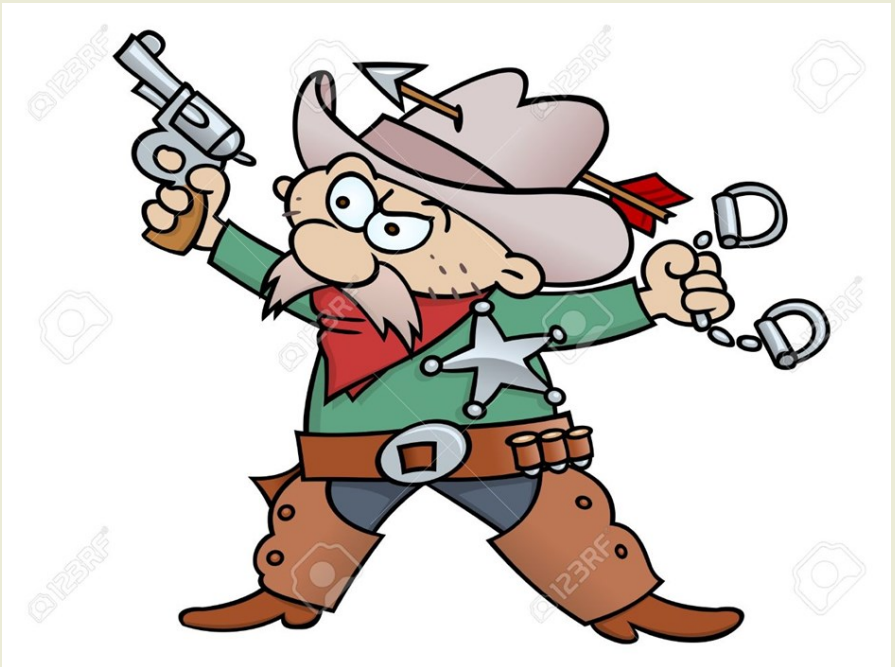
HOWDY Y'ALL!

**LATEST NEWS! MIDMAR MURDER MYSTERY
POSTPONED!**

**SADLY DUE TO CURRENT UNCERTAINTY RE COVID
INFECTION.....**

**BUT DO NOT HANG UP YOUR STETSON HATS –
THE SHOW IS NOW PLANNED FOR SAT MARCH
5TH 2022**

See next newsletter/NextDoor for further updates



News from Echt and Midmar Church of Scotland

The congregation is pleased, once again, to be meeting for 'in-person' services. During the pandemic and for ease of managing social distancing requirements, worship has been taking place in Echt Church. Services remain at the usual time of 10.15am every Sunday.

Meanwhile, Midmar Church will be open on the first Wednesday of each month between 11am and 12 noon for anyone wishing an informal time of quiet contemplation and reflection.



Masks still require to be worn in church buildings, and although no 'booking ahead' is necessary now, the names of those entering the church buildings still require to be recorded for Test and Trace purposes.

On a national note, the Church of Scotland is undertaking significant restructuring which will see a reduction in the number of whole-time equivalent (WTE) ministry posts in this area. The current allocation of 30.4 WTE ministers within the local Presbytery of Gordon is being reduced to 16 WTE posts.

The parishes of Echt and Midmar, Cluny and Monymusk, Kintore and Kemnay have been working collaboratively for some time now, and the ministers, together with representatives from all the churches, are looking to the future and are currently involved in designing a formal model of joint working. Then in August, following the retirement of Rev Martyn Sanders earlier in the year, our local ministers became permanently responsible for the parishes and congregations at Blairdaff and Chapel of Garioch. The four ministers in our local area – Rev Euan Glen (Cluny and Monymusk), Rev Neil Meyer (Kintore), Rev Joshua Mikelson (Kemnay) and Rev Sheila Mitchell will conduct weekly worship there on a rotational basis.

Although these are challenging times in many ways, the opportunities presented by working together and sharing resources are undoubtedly many and positive. The Church of Scotland is committed to maintaining a local, worshipping presence in our communities. As congregations, we are forward-looking – and very hopeful of being able to design new and creative ways of being a local church community.

Rev Sheila Mitchell

August 2021

Cluny, Midmar and Monymusk Community Council.

The Community Council have been meeting via Zoom over the summer and several projects have been finalised.

Defibrillators are now installed at both Sauchen village and Cluny school and funds raised for their upkeep. Many thanks to everyone who donated to the defibrillators. Funding is in place for the repairs necessary for Comers bridge.

A specialised mirror is to be installed at Monymusk junction with the B993 to ensure better road safety.

At last, the long awaited path from Sauchen village to Cluny School has been completed. Aberdeenshire Council are to be commended and the path is proving very popular for both pedestrians and cyclists, school children and adults.

Any local queries / problems for Midmar contact:

Richard Fyffe tel 01330 833295

Judith Stokoe tel 01330 843719

Ruth Wardle. tel 07818290334

Pics of the current harvesting being squeezed into dry afternoons in the area as we got to print!



Dear fellow residents,

Like many others I have indulged in a surfeit of television these past 18 months. The choice of viewing was immense. Apart from a huge variety of channels, Netflix provided an endless array of movies and season upon season of dramas ranging from Homeland to the delights of Scandi Noir. For months I have sat on the edge of my seat wondering what could possibly happen next. However, it gets a bit wearing after a time, as you reach saturation point.

Something different, a slower pace was sought and found in the joys of Countryfile, the Antiques Roadshow and the Repair Shop. The Repair Shop has proved a great success since it began a few years ago. We marvel at the craftsmanship and the know how of those who restore and renew. We are fascinated as we watch them take things apart and put them together again. Broken treasures, neglected mementoes and long discarded objects are patiently restored to their former glory. No wonder that those who return to collect their repaired items so often respond with tears, gasps and smiles.

The Repair Shop puts me in mind of the Men's Shed. A recent arrival in Midmar, the shed sits at the rear of the upper car park close to the village hall. Unfortunately plans and activities were put on hold with the coming of Covid. However, those involved have been busy. They have brought permanency to their accommodation, as they prepared for getting things back on stream. The Men's Shed is now up and running, open for business. They have also done sterling work in the hall and garden. Running repairs, regular maintenance and ongoing improvements have been undertaken. The hall is the grateful recipient of their labours.

Before signing off I would also wish to take this opportunity to thank the many anonymous individuals who gave their time and energy over these last months in maintaining the garden. Their contribution is also greatly appreciated.

Alistair McRobb

Hall Chairman

Summer interlude in Midmar

"And so with the sunshine and the great bursts of leaves growing on the trees, just as things grow in fast movies, I had that familiar conviction that life was beginning over again with the summer." — **F. Scott Fitzgerald, The Great Gatsby**

In a 'normal' summer, many Midmar residents might be elsewhere, in some far flung place. However this summer, many may be less itinerant and based here, in these 'travel hostile' and unpredictable times. Fortunately the weather, always a law unto itself, has been kind and we have been blessed with long days of sunshine, under which humans, other creatures and plant life have flourished. On the heath, the knee high grass, wafted by a fresh breeze, encourages country rambles, following the ancient tracks, and narrow trails, blazed by flocks of sheep and other creatures.. There are hazards on these country rambles- in the form of ticks lurking in the bracken, and other biting insects, but nevertheless it is a pleasure to wander in the open air, away from the 'madding crowd'. Usually the only sounds which disturb the tranquillity are the 'baa-ing' of sheep, or distant 'whinny' of an equine friend. On the ground the buzzing of insects can be discerned. In the sky above buzzards wheel and emit their high pitched cry. To my mind - a balm for the soul.



For the naturalist, or anyone who wishes to observe natural or man made phenomena, these rambles through heath, woodland, or along ancient tracks can be very rewarding. It is possible to intuit the 'past' in the ancient stone walls, which form the boundaries of ancient fues. Occasionally remnants of old crofts, and even the occasional former mill can be discerned in the landscape, which reveal secrets of bygone times. Within the natural landscape one can discern the changing seasons. The tall grasses reach the apogee of their growth and go to seed; the phosphorescent gorse, whose blossom brightened our landscape for many months during the



long cold spring, is now festooned with grey seed pods; the white seeds of the emblematic thistle, now float in the breeze.



Other shrubs, starting to bloom, like the rosebay willow herb remind us of the waning summer. Wandering the ancient pathways at this time, and observing the beauty of this environment, one can, perhaps, take pleasure in the moment, and forget all the travails and turmoil of the pandemic, which is still with us. We are fortunate that this place, with all that it has to offer, allows us to 'live for the moment'.

"Summer's lease hath all too short a date." — **William Shakespeare, Shakespeare's Sonnets**

Midmar Community Cafe

We will be running the community cafe 10-12am on the first Friday of every month.

Hopefully outside at the picnic tables - or inside the hall (masks until seated and with the tables more spread out than they used to be).

It will be table service only, until government COVID restrictions permit us to return to the old ways of doing things.

If anyone would like to get involved, help out occasionally with home bakes or ask any questions about how we are making sure we run the cafe safely, please get in touch with Hazel (01330 833280) or Jackie (07505 936271, knockfullertree@icloud.com)

Newsletter Cover Winner

Congratulations to Pamela Black for this editions cover photograph..





Stand Up Paddleboarding on your doorstep!

Aquaplay Scotland still have sessions available at Midmar Stillwater Fishery for September and the October Holidays. September:

Mornings, 10 TIL 12: Learn to SUP/ Develop your skills

Afternoons, 1 TIL 3: SUP hire

October Holidays: Details to be announced shortly (Kids sessions morning and afternoons.)

Booking details can be found on our facebook page and Website. Any enquires please contact Tom: tom@aquaplayscotland.com or 07393 993621 We provide all the equipment, you just need to turn up and be ready to soak up the ambiance whilst having fun and lots of laughter!



Badminton Anyone!

Before coronavirus made it's mark, we had a wee badminton group running in the Hall. All the equipment is there, just waiting for people to come along and play a game or two.

If you would be interested in coming along, please contact the hall on bookings@midmarhall.com to find out the days and times available.

We look forward to hearing from you!



Sponsoring the newsletter

If you would like to sponsor the newsletter prices are:

£10 for a business card size

£30 for a half page (landscape)

£60 for a whole page in colour (portrait)

The newsletter is non-profit making and where possible is distributed four times a year to 230 homes throughout Midmar as well as being published on the Midmar Hall website, Midmarhall.com

For any comments and queries regarding articles within the newsletter, please contact the writer as the Hall Committee does not take responsibility for content and accuracy of articles.

Please email newsletter@midmarhall.com

Hall for hire

Party timeShow time.....Tea timeMeeting room

Rates - £40 for half a day

- £75 for evening hire

- £500 for weekend hire

User group rates - £10 per hour for regular user groups meeting a minimum of once a month.

Deposit - a discretionary deposit of £250 is requested for some evening functions.

Facilities - Aside from the main hall & washroom there is an upstairs meeting room, back stage room and a kitchen.

We can offer a projector and screen in the main hall and the piano is available to musicians on request.

For bookings please call Mairi Black on - 01330 833371 or email her at - bookings@midmarhall.com



Are you a Landlord?

The Scottish Government's Energy Efficiency Regulations for the Scottish Private Rented Sector (PRS) that were due to come into force in October 2020 have been further postponed due to Covid. They will now be implemented by the next Scottish Parliament and at earliest April 2022 (to be confirmed).

The originally proposed regulations will also be amended and now required require private rented properties in Scotland to achieve at least a Band D Energy Performance Certificate (EPC) rating at change of tenancy when the Regulations come into force.

Midshore EP

Jim A Allan C Eng, M I Mech E

The Schoolhouse
Midmar
Inverurie
Aberdeenshire AB51 7PQ

☎ 07747 170707

✉ epmidshore@btinternet.com



Domestic Energy
Assessor
(for EPCs)



Want to know more, need some impartial advice or an EPC renewal please contact your local Domestic Energy Assessor (DEA):



**MILLER
PLANT LTD**

- EARTHWORKS CONTRACTORS •
- CRUSHING & SCREENING CONTRACTORS •
- PLANT HIRERS •
- DEMOLITION CONTRACTORS •
- HAULAGE CONTRACTORS •
- QUARRY & RECYCLED MATERIALS SUPPLIERS •

Tel: 01330 830033

Fax: 01330 830044

Email: info@millerplant.com

Web: www.millerplant.com

North Lurg, Midmar, Inverurie, Aberdeenshire,
AB51 7NB



Find us on:
facebook®

"What's on in and around Midmar"

We also have our website:

<http://www.midmarhall.com>

Our website is always up to date on events and what's on at the hall and community.

You can also download extra copies of the newsletter.

Through the website you can contact us with any questions you might have about the hall, its use, hiring it etc. We look forward to hearing from you.

How do you like yours??

If you'd prefer to receive a PDF copy of your newsletter please let me know.

Email: newsletter@midmarhall.com with the email address you wish to provide and you can start receiving it electronically.

It is also published on the Midmar hall website midmarhall.com and can be downloaded from there.



Inverurie Chartered Physiotherapy Clinic & Pilates Centre

Unit C, Site 5, Midmill Business Park, Tumulus Way, Kintore, AB51 0TG

Telephone: (01467) 633444

Physiotherapy

Podiatry, including routine foot care, minor surgery, biomechanics, insoles/orthotics

Pilates and Reformer Pilates

Children's Physio

Over 60's Exercise Classes

Stable & Able Classes

Parkinson's Class

Sports/Remedial Massage

Neuro Physio

Equestrian Physio

Dietitian

Also, Clinics & classes at Station 83 Gym Kemnay



www.physio-therapy.co.uk

www.midmartimbercentre.co.uk

MIDMAR TIMBER CENTRE

Smiddy Croft, Comers Road, Midmar, AB51 7PS

TIMBER PRODUCTS & BUILDING TIMBER

- FENCING & POSTCRETE
- GARDEN BARK
- SHEET MATERIALS
- DECKING
- CHIPBOARD FLOORING
- PLYWOOD
- PLASTERBOARD
- WEATHERBOARDING
- INSULATION
- PALLETS, CRATES & BOXES
- ROOFING FELT



GARDEN SHEDS, SHELTERS, MOBILE FIELD SHELTERS

- Timber cut to size • Competitive prices • Delivery available •



info@midmartimbercentre.co.uk

Tel/Fax: 01330 833581