

# Midmar Newsletter

Published by the hall committee on  
behalf of the Midmar community  
Spring Edition  
Issue 41—Spring 2021





This edition brings us some comments and memories from the children as well as two poems from two Primary 6 children...

### Some Loc

This year's lockdown was a bit better than last year when I could cycle to the school and I could have more fun outside, but I could see my family through zoom and Skype meetings. And the snow was fun. Some of my highlights of this year - I am able to make more sculptures from more cardboard because of lots of parcels mum's been buying - I am able to do a lot more building and get my Redstone skills up -to-date in Minecraft - I've got a few more books so I can read a lot more because last year I had read almost all of my books and reading them again and again and again just got a bit boring - I've been able to go out on the trampoline a lot more in the sunny weather, I quite like it when it's sunny because then I can go out a lot more and it's very very nice - I have been learning a bit of German and I am very impressed in my work, here is some of my German; Ich bin ein Katze Ich bin Ein Eichhörnchen Ich bin ein Meeresschildkröte Ich bin ein Delphine

A fun thing we did as a family was making shadow puppets. We hung up a bedsheet and then set up a light behind it. We then made different animals shapes with our hands, we had lots of fun and laughed at what we created.

My highlights Spending more time with the animals, I have enjoyed my music more and when we first did a kahoot quiz on google meet. My lowlight When a few of my friends and P1-3 were allowed back to school and we weren't..

Lockdown: Locked Up!	
There have been Pros and Cons of Lockdown 2021!	
Pros	Cons
I had fun sledging.	It got dark early so we couldn't
I spent time with my family.	We couldn't go cycling.
I have learnt new skills.	It was hard to go for walks.
I have been able to keep in touch with my friends and teachers.	The rules were stricter this lockdown.



**We went for a walk in very deep snow.**

**Never seen snow so deep before, it was much fun.**

**One day our pipes froze so we had to melt fresh snow for drinking water and we made snow cones with fresh orag he**

Lockdown
<ul style="list-style-type: none"><li>• Cooking with my mum.</li><li>• Helping my dad doing the dogs, tracking Foxes, doing thing in his shed too.</li><li>• Helping Sylvia with the horses. (the big black one is Thoren and the short brown and white horse is hercules)</li><li>• And Explorin With Ellie.</li></ul>

More fun from Midmar School..

L  
ockdown again, oh no, we cry!  
O  
nly last year, why o' why?  
C  
an't go to school, nor visit others,  
K  
eeping us at home, being schooled by Mothers,  
D  
ark nights and long wintery days,  
O  
h, how I wish to feel the sun rays!  
W  
ishing that COVID didn't rule our life,  
N  
ormality please, no more strife!

By Lachlan Criggie

#### MORERAPS Poem – Lockdown

M – Lockdown is a locked chest, waiting to be released  
O – I listen to the chatter of birds  
R – Forget your mask and you are taken to task  
E – I escape the chest to my garden and forget for a while  
R – I miss seeing my family, my family, my family  
A – Green gorgeous garden  
P – The garden breathes life and hope when it calls me out to play  
S – Lockdown is like a strange unsociable world that one day will be forgot



I finally got my  
motorbike and  
spent a lot of  
time playing  
with it with my  
dad.

## Stop the dog poo

Stop allowing dogs to poo in our school grounds and the  
road verges

You can get fined

**£100**

For leaving your dog's poo



Dog poo spreads diseases...





# Midmar Hall 100 Club

Thanks to those of you who have been members of the 100 club over the past year we have raised over £400 to help with running costs and maintenance.

Lynne Street has been running the 100 club for the past 4 years but is now moving on, so the Hall committee would like to say a massive thank you to Lynne, not forgetting her glamorous assistants Katie and Sophie, for all the effort made to keep the 100 club going, particularly throughout this last year.

With the annual draw coming up in May, we have looked at new ways of improving the running of the 100 club..... There may be some changes underway and possibly bigger prizes! Watch this space for more information and if you are interested in being the next coordinator of the 100 club, please get in touch through the newsletter or email [midmarhall@gmail.com](mailto:midmarhall@gmail.com)



**The Hall committee are always keen to recruit new members and are now looking for someone to come on board and fill the role as secretary. No previous experience required just some organisational skills and the ability to use a computer. Interested?**

**Contact us through this newsletter or by email to [midmarhall@gmail.com](mailto:midmarhall@gmail.com)**

## Calling all Bowlers!

.....or people who would like to try indoor bowling. Alan Blackie would like to hear from you to replenish Midmar Bowlers' friendly squad. Alan's number is 833 482.

## Newsletter Cover Winner

Congratulations to Isabel Birse for this editions cover photograph, a lovely introduction to Spring!

## **Midmar Hall Garden**

Many thanks to the volunteers who kept the garden looking so pretty during Spring and Summer of 2020, especially Geoff and Linda from Glenwood, together with Beth, our stalwart.

David Smith of Springhill Nursery, Dunecht Estate, helped us out again with a generous donation of perennials.

This was our first year without a big show of bedding plants.

All that work involved in increasing the number of perennials, mostly by transplanting offshoots from Midmar gardens is paying off.

Many thanks to the Men's Shedders who battled with various elderly lawnmowers and somehow won through to keep the lawn looking great. And Hilary's wheelbarrow has been essential.

We have a super little team of young Duke of Edinburgh volunteers who were helping out in September and October. Hopefully they will lend a hand again in the Spring.

Welcome to all garden volunteers who can lend a hand with weeding, pruning or mowing the lawn this year. There are also chuckies to lay around the hedge.

We are looking forward to the day when we can all meet in the garden again for a cup of tea at the community cafe and some social gardening!

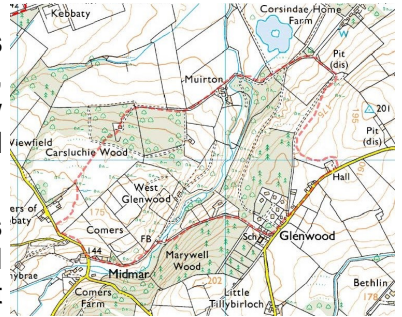
In the meantime if you want to lend a hand please get in touch via



# Boxing Day Walk 2020

Early on Boxing Day 2020, as Midmar was unceremoniously promoted to Level 4, COVID restrictions, the skies did not look particularly auspicious however by 09:00 A.M. conditions had improved and the promised extra strong winds had not yet arrived.

Earlier in that week we had consulted both the Ramblers Association and also Government guidance and decided our community walk could go ahead provided that we put track and trace information collection in place and did not gather inside the hall. Also, I attended an online COVID Officer training course which was very helpful, nothing I did not already know but it was beneficial to have a structure to make our own plan.



At least 13 intrepid souls arrived (ON TIME!) to take part and this year we elected to take the



simplest circular route from the Hall Car Park, via Corsindae, Carsluchie, Comers and then across the burn, up through Glenwood back to the Hall.



On the route, to minimise the requirement for surfaces to be shared, many thanks to Richard Fyfe who had arranged for the field gates by the Hall and Corsindae to be opened, so we only had to designate gate openers to cross the natural meadow ground of Carsluchie field as we reached them. To become a “gate opener” you arrive first and then have to wait till the whole group has transited your gate so you can close it.

By the time we returned to the hall car park the south west wind had strengthening significantly and had become uncomfortable, it was blowing all our bugs into the far distance but thoughts of sharing a mince pie in the hall garden had faded away for all of us. I for one am already looking forwards to December 2021 when I am sure all our traditional celebrations, including a community walk, will be very much appreciated.



*Article by Rob Ferguson : if you have comments/feedback on the content, my contact details are Tel 07767 317486 or eMail [rob.ferguson@aiexps.co.uk](mailto:rob.ferguson@aiexps.co.uk).*

## Action at the Men's Shed

Ski Touring - at the Men's Shed? Surely we just whittle tent pegs and fix engines? Well just to confound you we have happy bunch of people who are using the Shed to be a focal point for many activities. A ski-touring group has been set up to coordinate people in the area who want to get into the hills when the weather is right and enjoy long slides uphill and very short rides back down again. All are welcome no matter what experience or fitness you have. One intrepid soul recently built a snow-hole for an intentional overnight stop and, also practised with the safety transponders - practice makes perfect. For the future I think a few talks are in order from well-known skiers and safety people. If you'd like to join us (as covid rules permit) then please drop us a note as shown below.

As you are no doubt aware the Shed, and everything else, is currently closed until restrictions are lifted but it hasn't stopped us from planning. So, what's in the offing?

**a.** Bird/bat/owl box building - we have plenty of wood and patterns to make everything from owl boxes to wren sanctuaries. We intend to sell these at bargain prices in the Community, and this links in well with:

**b.** Tree planting - our target of 1000 trees across Midmar is on its way with 200 trees currently awaiting homes. Midmar school will be involved with some of the distribution and planting process. We are also in discussion with local landowners to access small, unused strips of ground and field edges. If you are interested in working with us to allocate some small areas then please get in touch - see base of article.

**c.** Two-stroke/garden equipment servicing and problem solving. Do you still have that mower/stripper/chainsaw etc sitting in the corner of the shed? You know the one - it never starts/cuts out/doesn't idle etc? Well once we are back in the Shed we'll be holding evenings to go through the basics and try to get the little blighter running properly. Nigel Bennett has promised some magic! We'll put out a notice via NextDoor once we can run the sessions.

**d.** Wanted woodturner - well we have some mighty fine equipment in the Shed. The problem is that the wood-turning lathe needs a capable pair of hands to show us how to get the most from it. Is there anyone in the area who is keen to share their skills? If so please contact Nigel as below.

**e.** Mountain Biking group - well another keen Shedder is wondering if families and enthusiasts in Midmar would like to form a group to coordinate mountain biking trips and set up trails in the area. Meetings can take place to discuss all things bikes - once the Shed is open. Contact as below.

**f.** Midweek Ramble - do you want to work up a thirst prior to the Community Café? We hope to coordinate a Friday morning rambling group when we are allowed. If you are interested, please let us know.

**New Chairman** - it's hard to call the position a 'new chair' but Nigel Bennet is now heading up the Midmar Men's Shed and has lots of new ideas for how, where and when.

Shedding is there to get people together in the Community. If you are fed up with your lot and need to get out a bit more then why not come along, have a blether, and come up with some cock-a-many idea that might appeal to some others as well. New friends and laughter anyone? Everyone is welcome - no age restrictions apply. We do mean everyone.

Provisionally we shall be there (covid restrictions permitting) on:  
Tuesday eve 19.00 until we leave.

Friday mornings - 10.00-13.00

Any changes will be posted in the Shed window.

For further information on:

Ski-touring group - David Smith - 07779 251 989 or [dsmith@c-tecnics.com](mailto:dsmith@c-tecnics.com)

Mountain biking - Martin Worth [martworth@gmail.com](mailto:martworth@gmail.com)



## Echt & Midmar Churches

### News from Echt and Midmar Church of Scotland

The Presbytery of Gordon, of which our local churches are a part, is in the process of updating its Presbytery Plan. Under the proposals, the local congregations of Cluny and Monymusk, Echt and Midmar, Kintore and Kemnay will all form an 'area grouping' – an increasingly collaborative and formal working partnership between ministers and congregations.

Approximately a year ago, our congregations held their first joint meeting with a view to beginning to develop our relationship with one another and to think about potential ways forward in the future. Although the pandemic prevented further in-person meetings from taking place, our ministers have been meeting each week online and weekly joint, shared services of worship have now been established and will be further developed.

Inter-congregational conversations have now been resumed as the churches consider closer working relationships and how best we might shape the future direction of the Church of Scotland in our local area. We look forward very much to the opportunities afforded by this new venture and in due course to sharing news of future developments and changes.

Rev Sheila Mitchell





### **“What a difference a day made”...**

One of my favourite Ella Fitzgerald songs, goes “what a difference a day made... twenty four little hours” ...Makes me think of the 23rd of March 2020 and the difference that date made to our lives. The next 365 days completely changed the way we lived...New words, new ways of working, schooling, contacting friends and family, shopping, spending free time.. Would our lives ever be the same again?

Just as we were enjoying our Christmas gifts of 2019 and looking forward to a warm spring...the door to our way of life closed, slammed.... “LOCKDOWN”. A new word had entered our vocabulary and would remain for the foreseeable future. Suddenly we were told how we would have to behave during the pandemic, with directives popping up on radio, television, motorway signs and mobile phones...  
STAY HOME,KEEP SAFE,WASH YOUR HANDS,PROTECT THE NHS.

These rules seemed easy to follow but we soon realised exactly what these seemingly simple rules meant. Working from home, schools and colleges and retail outlets closed . Shopping for essentials only. Participating in or watching live sport ceased. Cinemas and theatres closed their doors and pop concerts, festivals and gatherings of any kind were cancelled.

What to do with our 2020 diaries? Now all they contained was cancellations. We were lucky here in Midmar with beautiful countryside to roam in and the warm spring did come. We could explore our many local walks chatting to neighbours on our way. We set up a neighbourhood group to help with shopping, collecting medicines and walking dogs. We formed “bubbles” with family or friends. We came to terms with Facetime, WhatsApp and Zoom to meet up online with family, friends and other groups. We cleaned out cupboards, sheds and garages and booked slots to visit the recycling centres and charity shops. Something to note in our diaries!

Soon our quiet country roads in Midmar changed. Instead of “moving to the side of the road “ for passing tractors, we now had to watch out for Supermarket deliveries, online shopping vans and cyclists. Eventually things eased and we were delighted to meet up with friends in their gardens or for a walk. Then we were encouraged to “Eat out to help out”.. to financially help the hospitality section of our economy.....It did put dates in our diaries!

Soon, with the mastering of Zoom, groups were performing plays, concerts and talks were available online to suit all tastes. Students from primary through to university were learning online. Could we ever have envisaged a day when parents would actively encourage their children to get onto their laptops and mobile phones? Television came to our rescue with some excellent programmes to help us through the dark nights of the second lockdown. Thanks to our wonderful scientists, we can at last see light at the end of the tunnel.....New dates for the diary...appointments for a vaccination, schools and colleges opening up, meeting with friends. A welcome easing of the restrictions on our daily lives. I have a date highlighted in my diary already....

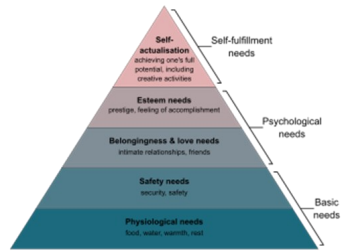
April 26th.....the date hairdressers may open their doors!

By Ruth McRobb

## Winter 2021 in Midmar- a tale of endurance and hope.

### *‘Every calamity is to be overcome by endurance’. Virgil*

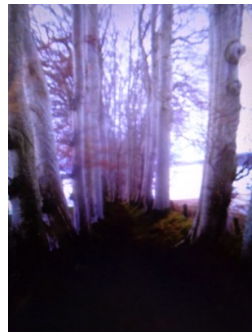
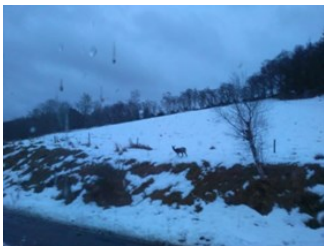
This winter in Midmar, and of course elsewhere at these latitudes, has evolved as no other- not in most of our lifetimes. Apart from the expected winter travails - low temperatures, darkness, ice and snow, as exemplified so enigmatically in the painting by Joseph Farquharson, a former inhabitant of Aberdeenshire, we are subjected to the rigours of living in a pandemic. Not a lot of fun for anyone – young old or those between. Most have suffered privations and been driven into basic survival mode, by the exigencies of the times.



This was intellectualized by the psychologist Abraham Maslow 1943, who characterized a situation such as this, as living in accordance with our ‘basic needs’- as illustrated by the diagram above, Maslow’s hierarchy. The implication is that other, less immediate concerns are postponed, or shelved meantime, until changed circumstances prevail. Perhaps this analysis makes some sense of our present circumstances.

For myself, as an observer of the natural world, in this locality and elsewhere, and an admirer of nature’s mysteries and survival modes, I see an analogy, in the manner in which trees, and other plants and animals, survive the winter months (regardless of pandemics!).

We witness the annual cycle of dormancy, survival and regeneration. Walking through the woods and beech avenues at this time of year, I am reassured by the starkness and beauty of the bare branches, which gather their strength from the now frozen earth. They wait for better times.



I know that, when the warmer weather comes, the buds will revive, the sap will start flowing and when the foliage returns, after the vernal equinox, we will witness a re- invigoration of life. It is my belief that this process may inspire us to hope that this situation, although fairly long term and recurrent, will eventually change. Our lives may at some point be less constrained .We may have hope for that.

*‘This too shall pass’- a quotation attributed to a number of ancient sources, but requoted by Abraham Lincoln, during tempestuous times in American history.*

A sneak peak into life on Auchorrie Farm this February...  
Courtesy of Marion Brown



This is a photo of feeding very hungry pregnant ewes. The sheep became hard to access as the snow built up and gates couldn't be opened.



This photo is of heavily pregnant ewes which walked over the field gate due to high drifts. They were left stranded and then needed to be brought inside by walking on the tractor path.



Cows very happy to see us!!

This is a photo of the road which was completely blocked.  
This blocked access to feed our cattle and sheep.



## Late Winter Snow

As we move into the next season, it would be impossible to ignore the very recent snow we all experienced..

Our farmers had to try to work their way around the challenges that snow brings for their day to day work. For the rest of us it was a challenge to simply get out of the driveway, let alone to wherever we might need to be for food shopping through to vaccinations, so its with great thanks to the likes of Wilson Contractors, Corsindae who travelled around the community clearing the path for us..

Some of us however, managed to make the most of the snows other offerings and have some fun from skiing to silly games as you can see..



Above: On the Ordiefork track a few days before the heavy snow and big drifts blocked everyone in ..... Courtesy of Jackie Humberstone

Left: From the drifts at Balblair. Courtesy of Nina Bidwell

## Sponsoring the newsletter

If you would like to sponsor the newsletter prices are:  
£10 for a business card size  
£30 for a half page (landscape)  
£60 for a whole page in colour (portrait)

The newsletter is non-profit making and where possible is distributed four times a year to 230 homes throughout Midmar as well as being published on the Midmar Hall website, Midmarhall.com

For any comments and queries regarding articles within the newsletter, please contact the writer as the Hall Committee does not take responsibility for content and accuracy of articles.

Closing date for submissions to the June 2021 edition is May15th.  
This covers June, July & August events.

Please email [midmar.newsletter@hotmail.co.uk](mailto:midmar.newsletter@hotmail.co.uk).

## Hall for hire

Party time .....Show time.....Tea time ....Meeting room

Rates - £40 for half a day  
- £75 for evening hire  
- £500 for weekend hire

User group rates - £10 per hour for regular user groups meeting a minimum of once a month.

Deposit - a discretionary deposit of £250 is requested for some evening functions.

Facilities - Aside from the main hall & washroom there is an upstairs meeting room, back stage room and a kitchen.

We can offer a projector and screen in the main hall and the piano is available to musicians on request.

For bookings please call Mairi Black on - 01330 83337 or email her at - [mairiblack@hotmail.co.uk](mailto:mairiblack@hotmail.co.uk)



## Are you a Landlord?

The Scottish Government's Energy Efficiency Regulations for the Scottish Private Rented Sector (PRS) that were due to come into force in October 2020 have been further postponed due to Covid. They will now be implemented by the next Scottish Parliament and at earliest April 2022 (to be confirmed).

The originally proposed regulations will also be amended and now required require private rented properties in Scotland to achieve at least a Band D Energy Performance Certificate (EPC) rating at change of tenancy when the Regulations come into force.

### Midshore EP

**Jim A Allan** C Eng, M I Mech E

The Schoolhouse  
Midmar  
Inverurie  
Aberdeenshire AB51 7PQ

☎ 07747 170707

✉ [epmidshore@btinternet.com](mailto:epmidshore@btinternet.com)



Domestic Energy  
Assessor  
(for EPCs)



Want to know more, need some impartial advice or an EPC renewal please contact your local Domestic Energy Assessor (DEA):



- EARTHWORKS CONTRACTORS •
- CRUSHING & SCREENING CONTRACTORS •
- PLANT HIRERS •
- DEMOLITION CONTRACTORS •
- HAULAGE CONTRACTORS •
- QUARRY & RECYCLED MATERIALS SUPPLIERS •

**Tel: 01330 830033**

**Fax: 01330 830044**

Email: [info@millerplant.com](mailto:info@millerplant.com)

Web: [www.millerplant.com](http://www.millerplant.com)

North Lurg, Midmar, Inverurie, Aberdeenshire,  
AB51 7NB



Find us on:  
**facebook®**

### "What's on in and around Midmar"

We also have our website:

<http://www.midmarhall.com>

Our website is always up to date on events and what's on at the hall and community.

You can also download extra copies of the newsletter.

Through the website you can contact us with any questions you might have about the hall, its use, hiring it etc. We look forward to hearing from you.

### How do you like yours??

If you'd prefer to receive a PDF copy of your newsletter please let me know.

Email: [midmar.newsletter@hotmail.co.uk](mailto:midmar.newsletter@hotmail.co.uk) with the email address you wish to provide and you can start receiving it electronically.

It is also published on the Midmar hall website [midmarhall.com](http://midmarhall.com) and can be downloaded from there.





## **Inverurie Chartered Physiotherapy Clinic & Pilates Centre**

*Unit C, Site 5, Midmill Business Park, Tumulus Way, Kintore, AB51 0TG*

*Telephone: (01467) 633444*

Physiotherapy

Podiatry, including routine foot care, minor surgery, biomechanics, insoles/orthotics

Pilates and Reformer Pilates

Children's Physio

Over 60's Exercise Classes

Stable & Able Classes

Parkinson's Class

Sports/Remedial Massage

Neuro Physio

Equestrian Physio

Dietitian

**Also, Clinics & classes at Station 83 Gym Kemnay**



[www.physio-therapy.co.uk](http://www.physio-therapy.co.uk)

[www.midmartimbercentre.co.uk](http://www.midmartimbercentre.co.uk)

# MIDMAR TIMBER CENTRE

Smiddy Croft, Comers Road, Midmar, AB51 7PS

## TIMBER PRODUCTS & BUILDING TIMBER

- FENCING & POSTCRETE
- GARDEN BARK
- SHEET MATERIALS
- DECKING
- CHIPBOARD FLOORING
- PLYWOOD
- PLASTERBOARD
- WEATHERBOARDING
- INSULATION
- PALLETS, CRATES & BOXES
- ROOFING FELT



### GARDEN SHEDS, SHELTERS, MOBILE FIELD SHELTERS

- Timber cut to size • Competitive prices • Delivery available •



[info@midmartimbercentre.co.uk](mailto:info@midmartimbercentre.co.uk)

**Tel/Fax: 01330 833581**