

Midmar Newsletter

Published by
The hall committee on
behalf of the Midmar
Community
Autumn Edition
Issue 35- Sept 2019



Dear fellow residents,

It happened again the other day. I was caught, helpless and completely unable to do anything about it. So I had to grin and bear it. I was travelling on the X17 from Westhill to Union Square. Directly in front of me were two women engaged in a fairly lively conversation. So animated were they at times that try as I might I couldn't shut them out.

Things became particularly interesting as we travelled down Union Street. They gazed out the window and passed comment on the amount of bookies, charity shops and property to let signs. One of them pointed upwards to the rooftops and the vegetation growing in the guttering, referring to them as 'the hanging gardens of Aberdeen'. Among the words they used I distinctly heard, 'disgrace', 'mess' and 'eyesore'. Eventually they took their leave of the bus, leaving myself and a few others with food for thought.

It cannot be argued that changes in shopping habits in recent years have led to the decline of the High Street. Faced with this, councils and business leaders throughout the country have joined forces to devise strategies to counter further decline. Some have attempted to take the public with them by conducting surveys seeking opinions and ideas. These have included suggestions to flat and rent properties that sit neglected above the shop fronts, in an attempt to re-populate city centres.

Rural communities have also faced change in recent years. Properties that once served as farmhouses and steadings have been turned into housing. Fields that fed generations of cattle and yielded crops have been sold to developers. Change is taking place all around us and it has a momentum that we sometimes feel helpless to resist. I suppose that is in the nature of things. We have to adapt and change.

Over the years the hall committee has been only too aware of this. We too have been faced with decline and the need to move forward in different directions. The profile of our user groups has changed radically and we too have resorted to surveys in an attempt to come up with answers to the problems we face. One of the initiatives proposed in recent months has been to establish a Men's Shed in Midmar. You have probably noticed the arrival of the temporary accommodation, situated in the upper car park, which is the first step in this exciting venture. Those involved have a great challenge before them. We wish them well in the exciting days that lie ahead as they turn their vision into reality.

Alistair McRobb, Hall Chairman

MIDMAR COMMUNITY HOGMANAY BASH 2019!

TUESDAY 31st DECEMBER 2019
Midmar Hall

**Plan ahead for all the thrills of
Hogmanay.....
Dancing to Live Ceilidh Band
Fun and Games for all ages
B.Y.O.B and Food
More details to follow**

Thank You to our Gardeners

Thanks to everyone who came and helped with the gardening this summer.

Beth did her usual masterminding of the colour scheme, and a lovely group of helpers worked hard to plant up the bedding plants provided by the council, as well as various donations of perennials from peoples' gardens.

The aim is to further reduce our reliance on bedding plants to provide summer colour.

If anybody has time on their hands and can manage a spot of weeding - please feel free to get in touch - or just crack on with whatever you can manage.

The Hall Committee would love to hear from anybody who could take a turn at cutting the grass. Drew Riach has done a super job ever since the garden was created, but his work pattern has changed and he has had to stop grass cutting. Thank you Drew - for that professional stripey effect. Do not laugh if you notice some wiggles in our stripes when you are passing...



Midmar in high summer

‘Into every life a little rain must fall’. Longfellow

Without the omniscience of a deity, or the foresight of a meteorologist, It would have been difficult to predict this rather changeable summer climate, as the months have unfolded. In June, according to precedent, one might have expected a little sunshine and balmy temperatures, providing an incentive to make forays into the countryside. This month was exceptionally soggy, with low temperatures discouraging exploration into the great outdoors, or beyond the doorstep, even! The immediate experience was of wellies, damp clothing, and umbrellas; the more distant horizon of hillside occluded by mist.



However, the indigenous plant life has thrived under these conditions. The local plantation of deciduous woodland became a riot of myriad shades of green. Close up, the young trees, no longer saplings, produced incipient fruits – such as acorns, hazel nuts, berries, and wild cherry, a precursor of the autumn to come.

‘A rainy day is a perfect time for a walk in the woods’ Rachel Carso

As the season progressed, the local bracken grew apace with the longer hours of daylight, and at its apogee, local pathways gradually became impenetrable.



In this month, which has traditionally been referred to as ‘flaming June’, the purple rhododendron, introduced many years ago, blooms, and their blossoms graced woodland tracks.



Gardens throughout the area, were ablaze with colour and botanical variety.

‘After the rain cometh fair weather’. Aesop

July proved to be a somewhat more settled month, and we were privileged to be able to see the sun occasionally. Summer rambles could be taken through forests dappled by patterns of light and shade.



As the season progressed, the meadows were graced with a rippling sea of windswept grasses, and the resilient foxglove reclaimed its colonial rights in areas denuded by deforestation.



This was our summer. ‘Paradise enow’, for the moment
Faith Mackenzie, Summer 2019

Midmar School News

Celebrating Success

Midmar School pupils have enjoyed success in many areas over the past months. Shannan Scotland and Stefanie Lawrence were placed 'best of the rest' in the Press & Journal Young Journalist Award, winning £250 for the school. Cameron Miller won the RNAS (Royal Northern Agricultural Society) competition to design the cover for their 20202 Show Catalogue. She won a gift voucher for £50.



The P4-P7 Class' display of 'Agriculture through the Years' was placed first at Echt Show. The class visited the Alford heritage Centre as part of their research,

Finally, Midmar School pupils swept the boards at the Echt Flower Show, winning prizes in most sections. Special congratulations to Perry Tierney who was Runner Up overall winning the Watson Trophy and Daniel Copp who won the Douglas Cup for

Best Exhibit in the children's Section. Daniel's prize was for his handwriting.

Tea Towel Enterprise

P1-P4 ran an enterprise to design and create a tea towel. Their company was called the Titanic Tea Towels. 50 tea towels were printed and sold.

We now have 38 pupils in school and are fully staffed again. We welcomed Ms Kasim in May. Our new Primary 1 pupils are Ruairidh Masson and Frankie Morrison. We also welcomed the Jacob family back to Midmar.




Save the Dates

Macmillan Coffee Morning – you are all invited to our Macmillan Coffee Morning on Friday 27th September in Midmar School from 9.30am – 11.30am. Children in Primary 5 – 7 will run the event. All monies raised will be donated to Macmillan Cancer Support.

Community Café – Midmar School will run the November café.

Craft Fair – Primary 5-7 will again run the Craft Fair on Saturday 8th November. The Fair will be held in Midmar Hall from 10.00 – 12.00. To book a stall call Midmar School 01330 700390 or email midmar.sch@aberdeenshire.gov.uk

The background of the poster is a stylized violin body in a light tan color with a fine dot pattern. It is set against a dark blue background. The violin's neck and head are at the top, and the f-hole is on the left. The body tapers towards the bottom where the tailpiece is. The text is arranged within the body of the violin.

MIDMAR HALL CONCERT

**SUN
2PM**

*Musical
afternoon*

**OCT
20TH**

*with Garioch Blend,
Bill Gray and Star
from Pitlochry - Eddie Rose*

• *Tea, Fine Piece & Raffle* •

TICKETS: £10



Come and enjoy Midmar Community Pub

**Everyone is welcome to relax on our sofas,
chat with friends, enjoy activities like
darts, pool, air hockey, catch up with local
news or swap a book with the Hall
exchange library**

**The pub is open at Midmar Village
Hall on the FIRST Friday of each
month from 7pm until 11pm.**

**Please “like” us on Facebook
www.facebook.com/midmarcommunitypub to
receive about pub events and other news.**

Midmar Men's Shed

Progress has been made . We now have temporary home for the Men's Shed courtesy of, and thanks to, Scott Ligertwood who no longer wanted the portacabin-like structure he and family have lived in whilst building their new home.

Keeping on theme with recycling we have re-used these buildings and relocated them to the top car park next door to the Hall. There is plenty of work still to be done but it is now at least wind and watertight. A coat of wood stain and some guttering will soon have them tidied up.



There are some 'spare' cabins at one side of the carpark and these will be scavenged for materials as soon as we can before finally being recycled and removed as well.

This is a temporary home which will form a base whilst we fundraise for the new building. The sheds will then also be recycled and the insulation and other materials will be incorporated into the new building. It is shame that the Council was so adamant that the current structure could not be re-used without a structural engineer's report, the cost of which would outweigh the benefit, so on we go to try to raise £40,000 for new shed.

We do have progress on various funding applications and we continue to raise small amounts from within the Community and we appear to have great support - thank you so much for your donations.



So, hopefully we can now become more active in the Men's Shed. We have a number of ideas to benefit the Community including the recycling of broken garden machinery such as mowers, strimmers etc. If you have such a machine that is not working, rather than throw it out, please give it to us and we might be able to fix it and use the funds towards the new Shed. Westhill Men's Shed do this very successfully and manage to raise many thousands of pounds a year which goes back into the Community. It is early days for us in Midmar but this is one of the many activities we will be undertaking in this informal group enabling people of all ages and skills to meet up. We meet Tuesday evening - now in the Shed. Bring some tea.

Finally we are very grateful indeed to Millers who have really helped us by provided serious machinery and manpower over a couple of days to help us relocate the sheds- many thanks indeed and well beyond our expectations.

Tuesdays
8pm



Midmar even

Come and enjoy
Midmar
Community Pub

Everyone is welcome to relax on our sofas, chat with friends, enjoy activities like darts, pool, air hockey, catch up with local news or swap a book with the Hall exchange library

The pub is open at Midmar Village Hall on the **FIRST** Friday of each month from 7pm until 11pm.

Please "like" us on Facebook
www.facebook.com/midmarcommunitypub to receive about pub events and other news.

MIDMAR HALL CONCERT

Musical afternoon

SUN 2PM **OCT 20TH**

with Garioch Blend,
Bill Gray and Star
from Pitlochry - Eddie Rose

Tea, Fine Piece & Raffle

TICKETS: £10

**Midmar Craft
Fair**

Midmar Hall

8th November

10am - 12pm



Day	Activity	Venue
Monday	Book Club (Last Monday of the month)	Various
Tuesday	After School Club	Midmar School
	Men's Shed	Midmar
	Bowling (October through to March)	Midmar
	Upholstery Class	The Little Byre
Wednesday	After School Club	Midmar School
	Circuits	Midmar
	SWRI (2nd Wednesday of the month)	Midmar
	Whist (4th Wednesday of the month)	Millbank Bowling Hut
Thursday	Mobile Library (fortnightly)	Hall car
	Upholstery Classes	The Little Byre
	After School Club	Midmar School
Friday	Community Cafe (1st Friday of the month)	Midmar
	Piano Lessons	Midmar
	Pub Night (1st Friday of the month)	Midmar

Speed Quiz 16th November 7.30pm M

nts at a glance

You can find more information on our website at Midmarhall.com

ue	Time	Further Information
	8pm -10pm	Alistair McRobb 833715
	3.15pm - 6pm	MASC - 07856732341
Hall	8pm	Dave Smith
Hall	7.15pm - 9.15pm	Alan Blackie 833482
e	7pm - 9pm	Kay Hourston 833515
	3.15pm - 6pm	MASC - 07856732341
Hall	7.30pm - 8.30pm	Duncan Sinclair 07872336309
Hall	7.30pm -9.30pm	Judith Stokoe 833719
Club	7.30pm -10pm	Isabel Birse 833209
park	9.45am - 10am	
e	10.30am-12.30pm & 12.30pm - 2.30pm	Kay Hourston 833515
	3.15pm - 6pm	MASC - 07856732341
Hall	10am - 12pm	
Hall	3.30pm - 8pm	Lucy Webster
Hall	6pm - 11pm	

SWI Open Evening
Barney Crockett,
Provost of
Aberdeen
Talk on old cinemas of
Aberdeen
Tickets £5
Refreshments & a
raffle

11th Sept 2019
7.30pm



Macmillan Coffee
Morning
Midmar School
27th September
9.30am - 11.30am



**FAMILY ORIENTEERING
& DUCK RACE**

2ND SUNDAY IN SEPTEMBER

Midmar Hall, £5 per person

HAVE YOU TRIED **SPEED** QUIZZING ?



Saturday 16th November, 7.30pm – Midmar Hall

£5 per person

BYOB, raffle, hot food by donation

Last year we upgraded the Midmar Hall toilets. This year we want to give back, and while having fun, we're aiming to twin the 7 toilets in the hall on the way to becoming a Toilet Twinned Community. Come along and join us for a Midmar pub quiz with a difference! The future of pub quizzing is Speed Quizzing! General knowledge & trivia, answered via a touchpad on your phone, iPad or tablet and it's against the clock - no time to cheat!

Grant Arms Cafe and B&B opened in June of this year!

The previous hotel closed down 3 years ago and the lovely old building had sat empty all that time but not any more...

It now hosts a cafe downstairs and 6 B&B rooms upstairs, all with ensuite shower rooms. We are loving welcoming visitors from all over the world already!

They use as much local produce, from local suppliers, as possible and are also trying hard to be environmentally kind by reusing and re-purposing as much as possible from the old hotel rather than purchasing new things.

There is a lovely courtyard with outdoor seating for fine days, plenty of room to store bikes and dogs are welcome out there too. There are lots of beautiful walks around Monymusk to enjoy before finishing your time in the Grant Arms.

Find them on:

Facebook: grantarmsmonymusk

Instagram: grantarms_cafe

www.grant-arms.co.uk

Tel 01467 651500



Cluny, Midmar and Monymusk Community Council

Cluny, Midmar and Monymusk Community Council:

The Annual General Meeting was held on the 27th of June in Midmar Village Hall commencing at 7.00pm. Two new Community Councillors were welcomed namely Ruth Wardle representing Midmar ward and Graham Tarn-Dyson representing Monymusk ward. The Chairman, Richard Fyffe, gave a resume of events from June 2018. With regard to Mill of Lyne the Community Council have been liaising with the Enforcement Officers but forward progress is slow. Garioch Partnership, i.e. Dawn Brown and Caroline Smith, are now working with the Community Council in connection with Sauchen Place Standard activities and an action plan has been produced. It is hoped that a Defibrillator will soon be installed in Sauchen. The Pop up Library in the old telephone box at Sauchen (purchased by Community Council for £1) now appears to be well established. Thanks go to Hugh Falconer for his on-going support and input into the Local Development Plan. The path from Sauchen to Cluny School is definitely ongoing whilst thanks go to Councillor Iris Walker in doing her utmost to resolve the Cluny Craigearn road bumps. Investigations are under way regarding the recent flooding at Monymusk which would seem to relate to the tarring of the road outside the relevant properties together with blocked gully and house drains. Police Scotland continue to support the Community Council meetings and it is stressed that any traffic issues at Monymusk, Cluny school and Sauchen should be reported to the Police in order that appropriate action can be taken. The next meeting of the Community Council is on the 22nd of August at Monymusk Village Hall commencing at 7-00pm. Please contact Richard Fyffe tel: 01330 833295 or Judith Stokoe tel: 01330 833719 with any local queries or problems. Community Council meetings are open to the public.

Midmar S.W.I.

Midmar S.W begin their new syllabus with an Open Evening on Wednesday September 11th. Barney Crockett, Lord Provost of Aberdeen, will give a talk on "Old Cinemas in Aberdeen". This commences at 7.30pm and there will be teas and a raffle. Tickets are priced at £5 and can be obtained from any W.I.member, the President and Secretary (see below) or payment can be made at the door. The next meeting on October 9th sees Jim Fiddes give a talk/demo on "The Granite Men" these being the men who worked the local granite quarries. Claire Bell visits again on the 13th of November to give members another insight into Wool Felting and this is followed in December by our Christmas Meal. Midmar S.W.I. welcome anyone interested and or new members. Further information from Judith Stokoe tel: 01330 833719 or Bev Mackinlay tel: 01330 833513.

ORIENTEERING

STARTS 10^{AM}
ON THE
POTARCH GREEN
LAST ENTRY 1^{PM}

MIDMAR PRIMARY SCHOOL

CHARITY NO. SC048676

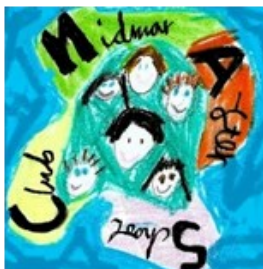
FAMILY ORIENTEERING & DUCK RACE

2ND SUNDAY IN SEPTEMBER

DUCK RACE

STARTS 1^{PM}
LAUNCH ZONE
POTARCH BRIDGE,
RIVER DEE

QUACKY RACES



Midmar After School Club After School Club Playworker

required for our rural, committee run after school club.

Hours: 3pm - 6.15pm, 3 sessions per week.

Applicants should hold a suitable qualification at SVQ level 3 or equivalent, or be willing to work towards this. Must be registered with the SSSC or be prepared to do so.

This post is subject to successful PVG scheme registration and disclosure checks.

For all enquiries, please e-mail mascbookings@gmail.com

Closing date for applications 28th Sept 2018.



Inverurie Chartered Physiotherapy Clinic & Pilates Centre

Unit C, Site 5, Midmill Business Park, Tumulus Way, Kintore, AB51 0TG

Telephone: (01467) 633444

Physiotherapy

Podiatry, including routine foot care, minor surgery, biomechanics, insoles/orthotics

Pilates and Reformer Pilates

Children's Physio

Over 60's Exercise Classes

Stable & Able Classes

Parkinson's Class

Sports/Remedial Massage

Neuro Physio

Equestrian Physio

Dietitian

Also, Clinics & classes at Station 83 Gym Kemnay



www.physio-therapy.co.uk

Hall for hire

Party timeShow time.....Tea time.....Meeting room

Midmar Public Hall is available to hire....

Rates - £40 for half a day

- £75 for evening hire

- £500 for weekend hire



User group rates - £10 per hour for regular user groups meeting a minimum of once a month.

Deposit - a discretionary deposit of £250 is requested for some evening functions.

Facilities - Aside from the main hall & loos there is an upstairs meeting room, back stage room and kitchen. We can offer a projector and screen in the main hall and the piano is available to musicians on request.



Bookings - call Mairi Black on -
01330 833371

or email her at - mairiblack@hotmail.co.uk



Beauty at Eden

Waxing ~ hot stone massage
Eyebrow treatments ~ Nails manicured
Minx nails ~ Facials ~ Make-up
Massage ~ Reiki ~ Pamper Parties

To make an appointment or for any further information please call Jane on: 0751 0099 239
12 Bennachie Gardens, Sauchen, AB51 7JG

Sponsor the newsletter

If you would like to sponsor the newsletter prices are:

£10 for a business card size

£30 for a half page (landscape)

£60 for a whole page in colour (portrait)

The newsletter is non-profit making and is distributed to 230 homes throughout Midmar as well as being published on the Midmar Hall website, Midmarhall.com

For any comments and queries regarding articles within the newsletter, please contact the writer as the Hall Committee does not take responsibility for content and accuracy of articles. Closing date for submissions to the Winter Newsletter is 15th November, this covers Dec, Jan & Feb.

Please email Amanda at
midmar.newsletter@hotmail.co.uk .

Thank you, Amanda



- EARTHWORKS CONTRACTORS •
- CRUSHING & SCREENING CONTRACTORS •
- PLANT HIRERS •
- DEMOLITION CONTRACTORS •
- HAULAGE CONTRACTORS •
- QUARRY & RECYCLED MATERIALS SUPPLIERS •

Tel: 01330 830033

Fax: 01330 830044

Email: info@millerplant.com

Web: www.millerplant.com

North Lurg, Midmar, Inverurie, Aberdeenshire,
AB51 7NB



Find us on:
facebook®

Midmar Hall & Community

We also have our website:

<http://www.midmarhall.com>

Our website is always up to date on events and what's on at the hall and community.

You can also download extra copies of the newsletter.

Through the website you can contact us with any questions you might have about the hall, its use, hiring it etc. We look forward to hearing from you.

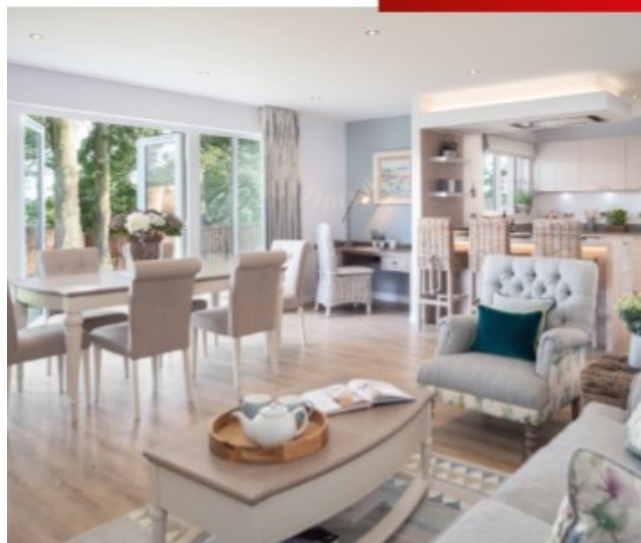
How do you like yours??

If you'd prefer to receive a PDF copy of your newsletter please let me know.

Email Amanda at midmar.newsletter@hotmail.co.uk with the email address you wish to provide and you can start receiving it electronically.

It is also published on the Midmar hall website midmarhall.com and can be downloaded from there.

Higher quality now comes at a lower price.



The perfect location. The luxury lifestyle. And now, even greater value, with the very best specification as standard, at every opportunity.

To appreciate the quality on offer at these excellent locations, and experience the high standard of specification for yourself, visit our Alford showhome or our Homebuyers Hub at Countesswells.

KINGSFORD RISE : ALFORD



Enjoy fantastic reductions of up to £50,000 at our Kingsford Rise development. For example, The Craig - was £279,995 - now £229,995.

Kingsford Rise showhome open by appointment.
Email: kingsfordrise@kirkwood-homes.com

COWDRAY MEADOWS : DUNECHT



A beautiful development with a range of 3, 4 and 5 bedroom luxury detached homes in the Scottish countryside, just minutes from Westhill, with prices from only £307,995.

More on Cowdray Meadows at Countesswells Homebuyers Hub.
Open Thursday 1pm - 7pm, Friday to Monday 11am - 5pm
Email: countesswells@kirkwood-homes.com

Find out more at kirkwoodhomes.co.uk



www.midmartimbercentre.co.uk

MIDMAR TIMBER CENTRE

Smiddy Croft, Comers Road, Midmar, AB51 7PS

TIMBER PRODUCTS & BUILDING TIMBER

- FENCING & POSTCRETE
- GARDEN BARK
- SHEET MATERIALS
- DECKING
- CHIPBOARD FLOORING
- PLYWOOD
- PLASTERBOARD
- WEATHERBOARDING
- INSULATION
- PALLETS, CRATES & BOXES
- ROOFING FELT



GARDEN SHEDS, SHELTERS, MOBILE FIELD SHELTERS

- Timber cut to size • Competitive prices • Delivery available •



info@midmartimbercentre.co.uk

Tel/Fax: 01330 833581