

Midmar Newsletter



Published by
Midmar Hall Committee
Winter Edition
Issue 20 - December 2015

Dear Fellow Residents,

Winter, for many, is a season that is long anticipated. Youngsters in particular regard it as a magical time, particularly the month of December. It is a season which provides opportunities galore for parties and family gatherings. Yet it must be acknowledged that many people have an aversion to winter. For them it is time of bitter sweet memories, of days that are all too short and nights that are far too long. Winter for some folk is a difficult season to endure because it is dark and dreich. While some take every opportunity to celebrate, others find the months of winter to be some of the loneliest of the year.

Certainly darkness is one the aspects of winter that many would rather do without. How fortunate we are, then, that our forebears had the insight to do something to help cheer the long winter nights. During the winter months there are a number of festivals that employ light. Just after the clocks go back we have Halloween with its lanterns and candles.

Then a few days later we celebrate Guy Fawkes night with its bonfires and fireworks.

Once December arrives shop windows, streets and homes feature displays of light which help, for a time, to banish the gloom. Add to this celebrations of a more localised nature that employ light, such as the fireballs in Stonehaven and Up Helly Aa in Shetland. In each of these cases light plays a significant role in helping people to make the most of the winter months.

Of course there is a downside to winter. After the days of celebration we go through withdrawal symptoms as displays are taken down and the lights that brought so much cheer are switched off.

One of my recurrent gripes after Christmas is over concerns disposing of the Christmas tree. Some years ago the Council decided that they would no longer collect Christmas trees. So, like many others, I have had difficulty in knowing what to do. I have put it in the back of the car and taken it to a tip; I have cut it up and bagged it and have even attempted to use it as firewood. Yet at the end of each Christmas season I find myself with a problem. What am I going to do with it this year?

In some parts of Northern Europe, Christmas trees are taken to a central point and a bonfire is set up. As the Christmas season becomes no more than a memory people gather around the bonfire, drinking mulled wine or cups of soup and as the fire rages they take their leave of Christmas. On Friday 8th January at 6pm there will be a Christmas tree bonfire at Midmar Hall. Please come along with your Christmas tree to add to the flames and enjoy a cup of something warm with perhaps the last mince pie of the season. If you are unable to get your tree there Drew Riach has offered a collection service, he can be contacted by telephone - 860380, or email - drewadr@gmail.com.

Alistair McRobb
Hall Chairman

**8th January 6pm
Christmas Tree Bonfire
Midmar Hall**

**Bring your old Christmas tree
Enjoy a warm drink and left over mince pies**

**Collection service available if you are unable
to get your tree there.**

ALL WELCOME

**Midmar Public Hall AGM will be held in the hall at 7.30 pm on
Wednesday 6 January.**

Followed by ordinary meeting at 8.00pm.

JIM BROADBENT

RAFE SPALL

**They have one chance to
save Christmas...**



Cert U

**Midmar Hall, Saturday 5 December - Movie tea
Doors open 4.15pm for 4.30pm film**

Celebrate Hogmanay as a Community

Midmar 2015 Hogmanay Community Party

**on
Thursday 31st December 2015
at**

**Midmar Hall
7.30pm – 2am'ish**

Disco by Road Runner Entertainments

**Bring your children!
Bring your own bottles and snacks!**

**Adult Ticket £5
Primary School Children and under £2
(includes Soup, Butteries/Hot Dog)**

All profits go to Midmar Hall

**Tickets available from 1st November 2015
please call**

Donna Miller 01330 833996 / 07801 815383



BURNS SUPPER 2016 MIDMAR HALL

Three course dinner provided
toast drink included
BYOB

Fantastic local entertainment

£18 per person

Contact Amanda on 07980 736 499 for details

SATURDAY 16TH JANUARY
DOORS OPEN 7pm

Cover Winner

Congratulations to Jessica Liddiard for her photograph of the fantastic sunset we had in Midmar at the end of September. I thought we would all enjoy the reminder.

Cinderellais back!

It has been 10 years since the first Midmar Players production of Cinderella and we are happy to announce that it is back!!

Don't miss this opportunity to see one of Midmar's funniest pantomimes ever written. Not only do we have the famous two ugly stepsisters, but add in another five (some of whom you are sure to recognise) and you will be rolling in the aisles!

The show dates for next year are as follows:

Thursday 17th March at 7.30pm

Friday 18th March at 7.30pm

Saturday 19th March at 2pm

Sunday 20th March at 2pm



Tickets will sell fast for this production, so don't miss out. Contact Jenny Begg as soon as possible on 01330 833474 to make sure you are part of the audience for this fantastic show.

Audience participation is most definitely a requirement!

Tickets from Jenny Begg
01330 833474





Garlogie Inn

Tel: 01224 743212

Opening times -*Morning Coffees & Home Baking: 10am - 12 noon*

Bar Lunches (Mon - Sat): noon - 2pm

Bar Suppers (Mon - Sat): 5.30pm - 8.30pm

Sunday: Food served all day until 8pm

Festive Menu 2015

Served in addition to our standard Lunch and Evening menus
Tuesday 1st December until Thursday 24th December 2015

Starters

Chef's Soup of the Day - £3.95

King Prawn & Avocado Cocktail - £5.75

king prawn, avocado, cucumber & red onion,
bound together in crème fraîche
with a dill & lemon dressing

Warmed Leek, Stilton & Walnut Tart - £5.75

Duck, Port & Cranberry Terrine - £4.50

served with a caramelised red onion jam & melba toast

Main Course

Traditional Roast Turkey - £13.95

with oatmeal stuffing, kilted sausages, seasonal vegetables
& mixed potatoes

Short Rib of Beef - £13.95

served in a red wine jus, on a bed of
horseradish mashed potato & seasonal vegetables

Grilled Herb Crusted Fillet of Plaice - £13.95

served with a creamy parmesan sauce, new potatoes & seasonal vegetables

Red Lentil & Root Vegetable Loaf - £8.95

served in a vegetable jus, with garlic & rosemary roast potatoes & seasonal vegetables

Deserts

Homemade Christmas Dumpling with Brandy Sauce - £4.95

Forrest Fruit Pavlova - £4.95

Raspberry & Lemoncillo Trifle - £4.95

Strawberry & Vanilla Ice-Cream Due - £4.95



Farming Life



Autumn here, winter on its way after a summer that forgot to come. Farming life has been a bit of a struggle this year again, as we depend so much on our so called seasons.

I'm writing this article on farming life due to a gentleman asking me one lovely autumn day, what the bales of straw are used for? I proceeded to explain that the barley/corn was sown over March/April which then grows over spring and summer, harvested usually at the end of August/September time. Although a lot of wet conditions and not a lot



of sunshine, meant a late harvest this year. Ripening of crops also depend on soil conditions, variety of barley, corn grown and land nutrient value. Barley/corn sown in fields year after year ripen quicker than fields that have had farmyard manure (muck) spread on them as the soil has more nitrogen making the crop ripen slower.

Combine harvesters; harvest the crops grown with the barley/corn being sold to feed merchants for animal feed or to distilleries for beer, whiskey malting, if crops pass certain tests for nitrogen screenings, moisture.

Feed barley is sold for around £80 a tonne and malt barley is usually sold for around £110 a tonne. The stalks of the straw, corn and wheat are baled, all gathered together and put in large sheds then stacked, covered or wrapped in plastic to keep dry over winter for feed and bedding of animal courts (the muck used to fertilise land at spring time)

"Very interesting I suppose I just take it all for granted" he replied. Winter last year was more rain than snow, cattle is still kept inside over winter months with feeding and bedding daily

During March/April the weather was kind to earlier lambers with a very unseasonal warm spell. Muck spreading, ploughing, lime spreading and sowing of crops were done in good conditions. Then it all changed the second week of April right through to the beginning of May, the rain came and came, we were lambing along with other farmers, it was awful. I still remember one weekend with heavy rain, day after day, it was so hard to save the new born lambs even the ones that were 7-10 days old, were giving up on life, then snow followed the following weekend and it was never ending work, Cold, rainy, wet and depressing days. One night 2" of snow fell, followed by hard frosts which meant double work for the farmers as the ewe's and lambs were taken inside to a pen-shed, the lambs were warmed up making sure they got a drink of colostrum (1st milk) if extra care is not given, death for the new born lambs wouldn't be far away.

The hard lambing this year meant losses we couldn't escape from, although we worked long and hard hours, we couldn't save them all.

Cow calving went well; they were kept in farm buildings longer than usual as grass growing was later due to the late snow frosts.

Late Spring meant that grass being fertilised and grass rolled that pushes surface stones back into the ground so silage machinery doesn't get damaged.

Sheep, cattle and lambs are vaccinated, castrated and dehorned. Their feet are treated for sores and foot rot. Animals are then carted away to fields with fresh, lush grass for summer grazing.

June arrived - silage time (Fodder crop cut whilst green and partially fermented in a pit or plastic wrap), a dry period is required for this, but rain again made it a long process.

Hay making (dry grass baled), this summer was virtually impossible due to the weather conditions.

Sheep shearing was on going during summer with a fleece worth around £2.50/£3.00 - another job that has to be done while the sheep are dry.

Summer just wasn't kind either, with little sunshine the crops weren't ripening. In Orkney, farmers didn't get their livestock outside for summer grazing due to cold, wet conditions and winter fodder being fed to them which was being shipped up to them from here.

End of August/September and October was a worry ground as it was still very wet and continued to rain yet again however it then changed - dry, warmer, windy weather finally arrived which was a god send for many farmers. The crops ripened and harvest got going. The good conditions meant the grain didn't need much or no drying, yields were good and straw got baled, but there were still many fields to be cut and straw to be baled and the rain came yet again (end of October).

Cows/Heifers are calving with us at the moment - calves born must be double tagged and registered with B.M.C.S (British movement cattle service) within 27 days of birth. The passports are then allocated to every calf born - without this paperwork the animals are worthless. This is done for traceability of the animal during its life. When the animal is sold at mart or slaughter house the passport must stay with the animal.

Fat lambs are being picked out ready for slaughter however prices are down this year, selling only at £60 per lamb, despite Scotch lamb being its seasonal best.

Store cattle are also down by 40p a kilo, leaving hardly any profit for the farmer.

Sheep/lambs are also double tagged which contains microchips; they can then be scanned on the farm, mart or slaughter house to identify the animals.

Sowing of wheat and oil seed rape crops is still ongoing.

Nearing TURKEY TIME AGAIN, it will be here before we know it! Hoping to hear from our usual and new customers soon for their Christmas and New Year orders.

A farmer's quote is "Hopefully it will be better next year" - that's what Norman says every year!!!
Marion Brown





Midmar Playgroup

Tues 9.30-11.30am

Wed 9.30-11.30am

2.5 to 5yrs

**Come meet other local mums & kids,
Contact Frances; frankie19701@live.co.uk
Get Involved, Get Chummed Up!!**



PicCOLLAGE

Midmar School News

Midmar Rotakids

Sula Humberstone, Kirsty Macmillan and Callum Stewart represented Midmar Rotakids at the Alford Rotary Youth Service Evening. They are pictured with pupils from Tough, Craigievar and Tullynessle Rotakid Groups. Also picture are pupils from Alford Academy REACT Group.



Children in Need

Pupil Council organised activities for Children in Need. These included 'Pin the bandage on Pudsey', 'Guess Pudsey's favourite number' 'Spot the Differences' and 'Pudsey bingo'. Pictured are the organisers and winners of the competitions.

A total of £105 was raised.

Beetle Drive – Winners

Aly Lyon, Jackie Humberstone, Maia Dowell, Seth Miller, Sula Humberstone, Kailey Maxwell, Kirsty Macmillan, Eva Dowell, Ailsa Lyon, Thomas Lyon



Under 5s Craft Fair

£52 was raised from sales at our table on 14th November. The money raised will go towards Water Aid.



Rotary Shoebox Appeal

A total of 29 shoeboxes were filled by Midmar School families. The boxes are now on their way to Eastern Europe. Neil Stirling, Alford Rotary is pictured collecting the boxes.

Christmas Concert – Monday 14th December 2015, 6.30pm all welcome. Midmar Hall

10th March

2016

Tickets go
on sale
early
December



Scottish
Opera

Be sure to
get your
ticket as they
sell out Fast!

Performing Opera Highlights at Midmar Hall
Contact Judy Stokoe for tickets 01330833719 or
email collinandjudy@btinternet.com

Live music
HEARTLAND
Save the Date
Band & BBQ
Sat 11th June 2016
Midmar School Parent Council

Thank You!

You know who you are and unfortunately I don't but can I thank you so, so much for laying chicken wire on the bridge down at Comers. Crossing the bridge used to be like crossing a skating rink! I, and many others I have spoken to, have fallen because it was dangerously slippery and the chicken wire is just the answer. I am extremely grateful as will many others who frequently walk the glen. Another instance of great community spirit!

THANK YOU, Jenny (Begg)



CLACHANYELL CEILIDH

BYOB & RAFFLE ~ STOVIES INCLUDED

CALL SARAH COPP FOR TICKETS ON

07831 556 598 OR 01330 833 557

OR EMAIL - east_steading@btinternet.com

Tickets on sale from 10th January

date

20/02/16

location

MIDMAR HALL

time

7:30PM

TICKETS £15



Showing at Midmar Hall

Saturday 30 January

Doors open 7.15pm for 7.30 film

BYOB, Tea, Coffee & Snacks available

Early Booking
Advised

“FEB FEST” at THE PUB AS A HUB

FRIENDS OF MIDMAR INN

Saturday 27th
Feb 2016
Midmar Hall

In aid of Midmar Village Hall funds, let's raise the roof again!

Programme of Events:-

- 18:30 – Opening
- Open Mike ALL night
- Great Selection of Beers
- 20:00 - Prosecco Sampling
- 21:00 - Gin Tasting
- 22:50 - Last Orders
- Food by Fresh Mex
- Family Games



Advance tickets **£12.00 or £14.00** on the door,
book now by calling **01330 830038**.

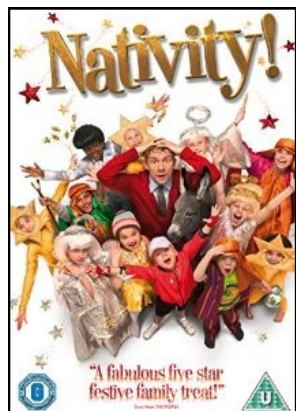
Price includes 3 tokens, that can be exchanged for alcoholic and soft drinks.

You can find more information on our website at Midmarhall.com

Midmar events



5th December



18th Dec-Echt Church

Boxing Day Walk
Starting at 10am
Midmar Hall

Day	Activity	Venue
Monday	Rising 5's (for our pre-school children)	Midmar School
	Book Club (Last Monday of the month)	Various
Tuesday	Playgroup	Midmar Hall
	Toddlers	Midmar Hall
	After School Club	Midmar School
	Upholstery Classes	The Little Theatre
	Bowling (October through to March)	Midmar Hall
Wednesday	After School Club	Midmar School
	SWRI (2nd Wednesday of the month)	Midmar Hall
	Whist (4th Wednesday of the month)	Millbank Bowling Club Hut
	Playgroup	Midmar Hall
Thursday	Mobile Library (fortnightly)	Hall car park
	PiYO	Midmar Hall
	Upholstery Classes	The Little Theatre
	After School Club	Midmar School
Friday	Community Cafe (1st Friday of the month)	Midmar Hall

Hogmanay Party
Midmar Hall
31st December
7.30pm til 2am ish



Events at a glance

Event	Time	Further Information
Primary School	10am -12pm	Barbara Harrison 860421
	8pm -10pm	Alistair McRobb 833715
Adult	9.30am -11.30am	Frances Millward Frankie19701@live.co.uk
Adult	9.30am -11.30am	
Primary School	3.15pm - 6pm	MASC - 07856732341
Byre	7pm - 9pm	Kay Hourston 833515
Adult	7.15pm - 9.15pm	Alan Blackie 833482
Primary School	3.15pm - 6pm	MASC - 07856732341
Adult	7.30pm -9.30pm	Judith Stokoe 833719
Howling	7.30pm -10pm	Isabel Birse 833209
Adult	9.30am -11.30am	Frances Millward Frankie19701@live.co.uk
Primary School	9.45am - 10am	
Adult	9.30am - 10.30am	Angie Barclay 07796076445
Byre	10.30am-12.30pm & 1pm - 3pm	Kay Hourston 833515
Primary School	3.15pm - 6pm	MASC - 07856732341
Adult	10am - 12pm	



**MERRY
CHRISTMAS**



**Cinderella
17th - 20th
March**



**Scottish
Opera**

**10th March
Tickets on sale
early December**



**"FEB FEST"
at THE PUB AS A HUB**

**27th February
6.30pm
Families welcome**

**2016
FALL
-7pm**



**The Legend
of Barney
Thomson
7.15pm
30th Jan**

**CLACHANYELL
CEILIDH**

20th Feb - Midmar Hall - 7.30pm

Walk up an Appetite (17) – Boxing Day 2015

I think this walk is one of Midmar's hidden gems. Most of the route uses well-made tracks and metalled road but there is a rougher section in Tillybirloch Woods so robust footwear is essential, a walking stick for balance is also recommended. The length of the walk is just over 2.5 miles so allow about one and a half hours to complete the circuit.

Boxing Day – Saturday 26th December, starting at 10:00.

As last year, I suggest we gather at the hall, ready to set off soon after 10:00 am. Please let me (Rob Ferguson) know in advance if you are planning to come so we have an idea how many Mince Pies to get in, or just bring your own! Tel 01330 830038. eMail rob.ferguson@aiexps.co.uk

- 1) For those coming by car, park next to the school. From the car park turn left to head NE past the front of the school and then turn left again almost immediately into the no-through road called Glenwood Cottages.



- 3) Where the tarmac turns sharp right towards East Glenwood house gates, walk straight ahead using the obvious footpath down the brae, continue heading SW.
- 4) Carefully cross Comers Burn using the foot bridge, then turn left (SW) on the other side on the metalled road.
- 5) At the junction opposite the old shop building, (with our only letterbox in the end wall), turn left again to walk south to re-cross Comers Burn; at the other side follow the road up the hill as it swings left (E) for about 100 yards.
- 6) Turn sharp right (SW) on to the obvious vehicle track that leads up into Tillybirloch Woods.
- 7) After about 200 yards, once the track levels out, the route for this walk leaves the vehicle track on a distinct footpath that heads SE up through the trees and across the contour of the land at an easy angle.

To identify the start of this footpath you will find a stone dyke leading away from the track at a right angle on your right (W) heading directly downhill, just beyond this the path starts on the left (E) side of the vehicle track. Another marker for the footpath start is that it is just before a wetter patch in the vehicle track, if you get as far as the disused sand/stone excavation (east of the track) you have definitely gone at least 150 yards too far!

- 8) To avoid occasional obstacles, the footpath winds a little but it is quite distinct. Eventually you will reach some significant wind-blow that crosses where the route of the old path, I found the easier detour is to go right (S) around the end of these fallen trees. It is actually possible to go either side.

This will bring you to an overgrown vehicle track and a wall running east/west.

Turn left (ENE) to follow the line of the vehicle track, (not the wall) this is feint at times but not difficult to find.

- 9) You will eventually come up to the NE corner, up slope from Tillybirloch farmhouse. At this point, turn left to follow the edge of the felled woodland back to the road (10 on inset map) walking on the woodland side of the wall; walk first NW then N.

This part of the route is very rough however in the New Year, (2016), the landowner is considering a proposal to clear a path along this section that will make it more practical for regular walking.

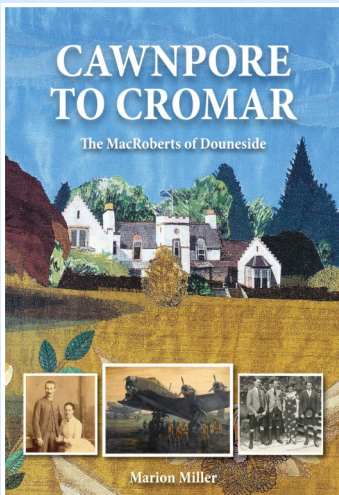
- 10) At road wall turn right (SE) on to the metaled road and walk up the hill into Tillybirloch.
- 11) Just after the Midmar Timber Centre and house, turn left (NE) into the lane beside Birley Cottage. This track quickly reduces to a path between two dykes heading north.
- 12) Continue between the dykes to return to the school car park.

*Please take OS Landranger Map 38 with you for additional reference information.
The total area is enclosed by Eastings NJ67 to NJ69 and Northings NJ06 to NJ08.
Article submitted by Rob Ferguson : if you have comments/feedback on the content
or wish to join us for the Boxing Day walk, my contact details are Tel 01330 830038
or eMail rob.ferguson@aiexps.co.uk.*



Meet the author

On the 18 November the interesting tale of the MacRobert family of Cromar was told to a fascinated audience by Marion Miller of Midmar. Marion, author of, 'Cawnpore to Cromar', described the inspiring life of Sir Alexander MacRoberts over two continents, along with the lives of his two wives and their legacies here and in India.



Marion also shared some of the amusing, frustrating and coincidental moments that went into writing her book.

A delightful evening spent with neighbours discussing neighbours past with neighbours present.

Cawnpore to Cromar, £12.99 is available from Marion Miller tel- 830140.

email - marion@millerfarms.co.uk.

An ideal Christmas present!

SWRI

Midmar S.W.I. recommenced on the 16th of September with a talk given by Jackie Simpson. Jackie give us an insight into her work which entails one to one counselling at branches in Aberdeen, Aboyne and Banchory.

October the 14th was our "Open Night" which this year took the form of a fashion show. Ingar of "The Fountain" Inverurie very kindly agreed to provide dresses and accessories and 3 Midmar members plus one daughter were the mannequins. The models had great fun trying on dresses and thoroughly enjoyed "strutting their stuff on the cat walk" (This was kindly



loaned by Midmar Players and erected by Colin). An excellent crowd attended and everyone had a most enjoyable evening. November's meeting was a visit/ demonstration by Graeme Collie butcher from Kemnay. I think Graeme brought most of the shop with him and had a wonderful display of different cuts of meat, sausages and ready meals. It was obvious that Graeme enjoyed his job although it was not easy with long hours. The next meeting is our Christmas lunch at the Tor Na Coille, Banchory on the 2nd of December. New members are always welcome. contact telephone numbers being Michelle Paterson 01330 833490 and Judith Stokoe 01330 833719.

Cluny, Midmar and Monymusk Community Council

Cluny, Midmar and Monymusk Community Council held their A.G.M. on October 29th in Midmar Village Hall. Richard Fyffe, Chairman, detailed the various items dealt with by the Community Council over 2015. These included Wind Farms, repairing Comers Bridge, the recycling centre at Lyne of Skene, re-instating paths around Midmar Community to mention but a few.

Due to unforeseen circumstances, the meeting scheduled for the 26th of November has been cancelled. Meeting dates for 2016 will be advised in the near future. Everyone is welcome to attend meetings and to raise any queries or problems with local issues.

Midmar Community Councillors are Richard Fyffe tel: 01330 833213, Judith Stokoe tel: 01330 833719 and Kay Hourston tel: 01330 833515.



My goodness, how times flies. It doesn't seem that long ago that I was introducing myself in the Winter edition of the Newsletter twelve months ago!

Echt and Midmar Churches together have a very busy time ahead. To start the Christmas season off, we will be holding the annual Christmas Tree Competition at Echt Church this year at 6.30pm on

the 6th December. Do come along and see the decorated trees and take part in the voting. There will be carols old and new, stories and readings.

On Friday 18th December we will be showing the popular film 'Nativity' starring Martin Freeman and Ashley Jensen. Come along and watch the film which is suitable for all ages. It will be on at Echt Church at 7pm. There will be ice-cream available too!

On Sunday 20th December, we will have our usual morning service at 10.15am in Echt Church and in the evening we will be carol singing around Midmar from 6pm onwards. Listen out for the carols and join us if you would like to!

On Christmas Eve - Thursday 24th December - we will be having our Family Christmas Christingle service at Midmar Church at 4pm. Come and sing carols and make a Christingle to take home with you. We might also be able to persuade a very special four-legged friend to join us again too. This is really a wonderful and family friendly service and a really good start to Christmas.

Also on Christmas Eve we have a Watchnight service which is in Echt Church. Doors will open at 10.45pm, there will be carol singing from 11pm and the service will start at 11.30pm and is due to end at 12.15am.

On Christmas Day we will have morning worship at Midmar at 10.15am. This is a short service and you are very much encouraged to bring a present that you have received.

Everyone is very welcome to one or every service. It would be great to see you all to celebrate the birth of Jesus Christ, the Light of the World.

Elsbeth McKay

Garioch Blend

Once again this event has been a tremendous success, all tickets easily sold. Three lucky ticket prizes were donated by The Strathburn Hotel Inverurie, Celebrations of Turriff and Wilson Contractors Sauchen, many more gifts were donated to the raffle also, these are very much appreciated. Thanks to Alastair, Marion, Miari and family, Pamela, Judy and Colin for their help to set up beforehand and on the day.



A fantastic sum of £1107.00 was made, thanks to everyone involved.
Bert and Isabel.



The colours of the Fall in Aberdeenshire

'No spring or summer beauty hath such grace, as I have seen in one autumnal face'.

John Donne

Over many years I have observed the changing colours of the seasons. The varying hues within the landscape, accompanied by diminishing temperatures, signal the onset of autumn.

The first signs, in late September, perhaps in the aftermath of a heavy morning dew- the precursor of later frosts-are heralded by the turning leaves of the birch and sycamore, green metamorphosing into gold and red. Isolated leaves drift silently to the waiting ground. Later this process gathers momentum, and as the decaying leaves start to fall in their multitudes. October sees a carpet of multi-coloured drifts of leaf matter on lawn , flower beds, and on garden pathways.



On sunny days these colours are illuminated, and take on iridescent tones, brightening the landscape. The leaves of the Rowan, in its many varieties, change from green to orange to light pink. The Larch needles take on a golden tint, before a sharp frost, or a strong breeze precipitates their release from the parent tree. Whole swathes of forest change from gold to brown overnight. The deciduous woodland areas, populated by

local and non-indigenous trees, are illuminated by the autumn sunshine and create a theatrical backdrop of browns, tans and gold, before the fall with the onset of winter.



Within these woods, the berries of rowans and holly provide bright splashes of orange and reds- for a brief time sustaining the local avian population, in the late autumn days.



Ruby rosehips and the purple tips of rosebay willow-herb provide splashes of colour along the narrow country roads , and from early August, through to October, fungi of many different tints and varieties emerge surreptitiously in the local woods-manifesting a spectrum of colours, from white to black, with pinks, reds, purples, yellow , brown and gold- some edible, many not. Some adhere to the branches of dead trees, others

proliferate under the shady branches of beech, Scots pine and birch.



As temperatures drop, and the frost sets in, whole hillsides of bracken change from green, to gold, to brown. Distant hillsides take on a purple hue, from the flowering heather.



Of course, as the Internet pundits remind us, 'Mother Nature doesn't flaunt her colours just for humans to enjoy- the real story is biological'. (13 mind blowing colours in Nature'-Megan Taylor Morin- August 2013).These incredible hues are not just for aesthetics, but are evolved for a purpose. Red coloration frequently acts as a warning- as with many Amanita mushrooms, or as an attractant, for consumption by birds or other creatures. Plants

such as the Holly and Rowan benefit because the digested berries will be dispersed and have a greater likelihood of germination, initiating a new cycle of plant growth. Some fungi and other plants, such as the Bird's Nest orchid adopt subtle coloration as camouflage, to blend in with their immediate environment, as a form of protection against predators.

Intentional or not, it is a privilege to witness these aesthetics from Mother Nature. Amazing really! It is also reassuring to know that although autumn is associated with the decay of many plants, the time when they divest themselves of their annual foliage, we can look forward to a new season of plant rejuvenation with the arrival of spring.

As Albert Einstein (albeit, to my knowledge, not an Aberdeenshire resident!) said, *'There are two ways to live: you can live as if nothing is a miracle; you can live as if everything is a miracle'.*

I know where I stand, when I witness the wonderful colours manifest in the environment at this time of year. Faith Mackenzie. 2015



AUCHORRIE FRESH FARM TURKEYS



For Christmas or New Year
TEL. 01330 833686 or
TEL. 01330 833461



Inverurie Physiotherapy and Podiatry Clinic

Podiatrist: Kevin Cole BSc (Hons), DPodM., MChS



We provide expert care, diagnosis and treatment of ankle and foot disorders for children and adults. First for foot health.

All treatments are carried out in a relaxed, welcoming environment with the highest standards of care. We offer routine foot care and specialist treatment for all foot and ankle problems.

Contact the clinic to make an appointment; Tel: (01467) 633444 or email: info@physio-therapy.co.uk



Inverurie Physiotherapy and Podiatry Clinic
Midmill, Business Park, Tumulus Way, Kintore, AB51 0TG

NEW VIEW HOME

– ONLY FIVE MILES FROM WESTHILL –



COWDRAY FIELDS, ECHT

Plot 11, MELVILLE: a five bedroom luxury home. Three bedrooms, each with en-suite; large living room; formal dining room; spacious kitchen and family room.

Luxury specification includes: integrated Siemens appliances to luxury German Leicht kitchens; Villeroy and Boch sanitaryware and Porcelanosa tiling – luxury comes as standard.

FIXED PRICE £559,995

plus £14,000 worth of upgrades
and £10,000 flooring package included*

Cowdray Fields is situated within the village of Echt only five miles from Westhill and 12 miles from Inverurie.

Showhome Open:

Thurs to Mon 11am-5pm

Call: 01330 860892.

Find out more at:

www.kirkwoodhomes.co.uk/cowdrayfields

* plot-specific, terms and conditions apply. Enquire with our sales adviser.

BUILDING AT: ALFORD, COVE, MONYMUSK, POTTERTON AND STONEHAVEN

COMING SOON: developments at Woodlands of Durris, Laurencekirk and Blackdog (by Balmudie)

Register online for regular updates and offers.
Find out more at www.kirkwoodhomes.co.uk

bringing quality to life



**KIRKWOOD
HOMES**



Hello!

Broadband and mobile phone signal rated as your top issue last year. To address your concerns we have started two petitions:

1. ["UK Government: Immediately review the Mobile Infrastructure Project."](#)
2. ["BT: Clarify broadband delivery status in rural Scotland."](#)

..and we need your help to get it off the ground.

Broadband and mobile signal are essential services that all rural communities should have. We need to take action to persuade BT and the UK Government to improve access for rural communities as soon as possible.

Help us by:

- Sharing the petitions on Facebook or Twitter
- Using #ruralconnected

Becoming a local [Rural Connected](#) champion for your community

For more information see: <http://www.scottishruralparliament.org.uk/digital-campaign/>

Thanks!

Emma Cooper

National Coordinator

Bag loads of quality from GPH



GPH
**BUILDERS
MERCHANTS**



LANDSCAPE
& GARDEN



TIMBER
& JOINERY



CLOTHING
& PPE



GENERAL
SUPPLIES



ROOFING



PLUMBING



DECORATING
& PLASTERING

INVERURIE BRANCH ► Highclere Business Park, Inverurie . T: 01467 621926

WESTHILL BRANCH ► Prospect Place, Westhill . T: 01224 748313

STONEHAVEN BRANCH ► Spurryhillock Ind. Estate . T: 01569 763806

www.gph.uk.com



Open to Everyone!

Sponsor the newsletter

If you would like to sponsor the newsletter prices are:

£10 for a business card size

£30 for a half page (landscape)

£60 for a whole page in colour (portrait)

Please email Amanda

Midmar.newsletter@hotmail.co.uk



Local Gas Safe Registered Plumber

K. Milne Ltd

Tel: 079180 70928

01330 833670

k.milne@live.co.uk

Work undertaken includes: boiler services; heating upgrades and maintenance; natural gas, oil and LPG appliance installation/maintenance; wood burner installation and bathroom upgrades.

For any comments and queries regarding articles within the newsletter, please contact the writer as the Hall Committee does not take responsibility for content and accuracy of articles.

Closing date for submissions to the Autumn newsletter (which covers events September, October & November) is the 17th August.

Please email Amanda at midmar.newsletter@hotmail.co.uk .
Thank you, Amanda

www.baileystaxis.co.uk



Baileys taxis

Taxi from your local loon!!!

07533998969

Kemnay
Inverurie

Iain bailey

Info@baileystaxis.co.uk



Find us on:
facebook®

We're also have our website:
<http://www.midmarhall.com>

Our website is always up to date on events and what's on.

You can also download extra copies of the newsletter.

Through the website you can contact us with any questions you might have about the hall, its use, hiring it etc.

We look forward to hearing from you.



- CIVIL EARTHWORKS CONTRACTORS •
- CIVIL ENGINEERING & GROUNDWORKS CONTRACTORS •
- CRUSHING & SCREENING CONTRACTORS •
- PLANT HIRERS •
- DEMOLITION CONTRACTORS •
- HAULAGE CONTRACTORS •
- QUARRY & RECYCLED MATERIALS SUPPLIERS •

Tel: 01330 830033

Fax: 01330 830044

Email: info@millerplant.com Web:
www.millerplant.com

North Lurg, Midmar, Inverurie, Aberdeenshire,
AB51 7NB

Beauty at Eden

Waxing ~ hot stone massage
Eyebrow treatments ~ Nails manicured
Minx nails ~ Facials ~ Make-up
Massage ~ Reiki ~ Pamper Parties

To make an appointment or for any further information please call Jane on: 0751 0099 239
12 Bennachie Gardens, Sauchen, AB51 7JG



Vital Veg

We grow over 100 different varieties of great tasting, chemical-free veg in Midmar!

We don't supply supermarkets. We only sell to real people like you.

To have a veg box delivered to your home:

www.vitalveg.co.uk

Tel: 01330 833 823

wendy@vitalveg.co.uk

MIDMAR TIMBER CENTRE

Smiddy Croft, Comers Road, Midmar, AB51 7PS

TIMBER PRODUCTS & BUILDING TIMBER

- FENCING & POSTCRETE
- GARDEN BARK
- SHEET MATERIALS
- DECKING
- CHIPBOARD FLOORING
- PLYWOOD
- PLASTERBOARD
- WEATHERBOARDING
- INSULATION
- PALLETS, CRATES & BOXES
- ROOFING FELT



GARDEN SHEDS, SHELTERS, MOBILE FIELD SHELTERS

- Timber cut to size • Competitive prices • Delivery available •



info@midmartimbercentre.co.uk

Tel/Fax: 01330 833581