



Dear fellow residents,

Recently I caught a few minutes of a conversation on the radio. The subject concerned the changing face of communities, both urban and rural, as a result of the implementation of environmental technology. As is so often the case, I was only half listening but one phrase remained in the memory - 'we live in a changing landscape'. Well, that phrase certainly describes events in Midmar this summer. You need walk no further than Comers Brae or past the school to see that we are in the process of living in a 'changing landscape'.

Our changing landscape will impact upon the skyline that surrounds our homes and then there is the disappearance of some much loved walkways, albeit temporarily. As I thought of these changes, I recalled a pet phrase of a former colleague, 'all of life is organic, constantly subject to change'. That is certainly true. Many of you, who have deep roots in Midmar, will no doubt remember far greater changes than the felling of trees. The demolishing of the local school in order to replace it with another; cottages, long empty, being brought back to life, farmsteads being renovated and scattered pockets of new build homes appearing on former fields.

We, who are relatively new to Midmar, owe you our thanks for embracing change so readily. Because of that we were attracted to this community. A community with so much to offer; a haven from the daily routine. A community that provides something for every age group, where young and old alike are valued. A community of open spaces and stunning vistas.

One constant in the midst of change through the years has been the village hall. From the beginning it has been a focus, a meeting place, a gathering point. A place to socialise and be entertained. I'm certain that many of the activities on offer at the hall have changed over the years. However, the efforts of each committee during those years have been similar. To keep the hall in a state of good repair, to create within it a vibrancy attractive to all age groups and to ensure that a welcoming ethos remains a top priority. As you will see elsewhere in this newsletter a variety of groups use the hall, covering a wide range of interests. Whoever you are, whatever your interests you are assured of a warm welcome at any of the activities they provide.

Alistair McRobb, Hall chairman

Midmar Under 5's

Welcome back to the new term. We welcome new members at any time, so please feel free to join us and see what goes on.

Toddlers (Tuesdays 9.30-11.30) meet in the back room behind the stage in the main hall, this is a chance for new mums to get out and meet other mums in the area. There are mums and babies from surrounding villages as well as from Midmar. Come along for coffee, cake and snack, plus the chance to make new friends.

Playgroup (Tuesdays and Wednesdays 9.30-11.30) is held in the main hall with plenty of activities for the children, including crafts, climbing frame, trampoline, dressing up, ride on toys to name a few.

Rising Fives is for our pre-school children. It is run within Midmar School (Mondays 10-12) and is a fantastic way for the children to get to know the school in the year before they start. There are many activities on offer.

Contact

Laura Wade – 01330 833810/07973770814

Playgroup – Pamela Black 01330 833682

Rising fives – Barbara Harrison 01330 860421



Dates for your diaries - fundraisers

Bags 2 School collection - Tuesday 1st October, bags will be available from Laura Wade, but ordinary bin bags are accepted. If you have any donations please drop them off at Midmar Hall (bagged) on the morning of the collection, before 9am. This is a fundraiser for the Under fives so please donate if you can.

Bag2School collects **good quality** second hand adults' and children's clothing, sheets, blankets, curtains, soft toys, shoes, belts and handbags. All items collected are for **RE-USE**.

Photographer – Saturday 5th October.

Suzie Edge (Edge Photography) is doing a photo session between 10am and 2pm, slots are £5 and there is no obligation to buy, but a percentage of any sales is given back to the under fives. Please contact Laura Wade for a time slot.

Christmas craft fair – Friday 15th November (please see opposite page)

Lots of stalls with fantastic craft and gift ideas for Christmas presents.

Missing Hall Minutes

We have a plea to find the missing Hall Committee minute books of years gone by? If any one knows where they are, could they please contact me. Further to the interest generated at the '100' club 'do' it would be great to find out more about the development of the Hall over the years.

Please contact Marion Miller on 01330 830140 if you can help, thank you.



SAVE THE DATE! CHRISTMAS CRAFT FAIR

date	location	time	
15TH NOV	MIDMAR HALL	7-9PM	More details to follow

MIDMAR SHEET MOVIES

ARE PROUD TO PRESENT...



SAT 28TH SEPTEMBER

8PM

ADMISSION £5



SUN 3RD NOVEMBER

10:30AM

ADMISSION £5 (£15 FAMILY)

MIDMAR HALL

DOORS OPEN 20 MINUTES PRIOR TO PERFORMANCE

REFRESHMENTS AVAILABLE

Exciting new business for Midmar

The Millers is re-opening under new ownership, Treehouse, who already have been trading in the west end of Aberdeen for nearly 20 years as Wood Floor Centre and Treehouse Interiors specialising in quality hardwood flooring, carpets and Neptune kitchens, bathrooms and furniture along with home accessories.

This is a great opportunity to both showcase what we are already selling and bring in new lines such as Natural stone and outdoor furniture. We also will have a company working with us specialising in wood burning stoves and range cookers.

Great news also for the community will be the re-opening of the refurbished restaurant which has had a substantial make over.

Our plans are to open the ground floor in October, and we shall then be working on the upstairs showroom areas along with a new art gallery for the ground floor.

We shall be looking for both full time and part time sales staff and anybody interested who has a flair for interiors or a sales background and wishes to apply should contact me on steve@woodfloorcentre.com

We are really excited to be opening what will be a completely new retail experience in Scotland with so many different aspects of home improvement under one roof in what will be a very unique location.

We look forward to meeting you,
Steve & the team

Cover Winner

Congratulations to Rob Ferguson for his winning photograph. Taken from the top of Greymore on Hill of Fayre which is included in this editions 'Walk up an Appetite' (and the last edition. Barmekin Hill is on the right and Mither Tap (Bennachie) is on the left. Please keep your photographs coming in. Midmar.newsletter@hotmail.co.uk





The Midmar Piano Fund

Pianists Victor Kapoor, Hazel Ibbetson and Jonathan Wilson with guest musicians will present a programme of music by Liszt, Debussy and others as well as original works by Jonathan Wilson and Victor Kapoor. Full program to be announced.

Tickets : £12 adults, £6 U16 and U12s free.

Tickets available on the door or available in advance from:

<http://www.ticketsource.co.uk/midmarhall> or contact Jonathan Wilson (Tel: 01330 833910)



David Tennant Pam Ferris Jessica Hynes Marc Wootton

ENTERTAINMENT ONE PRESENTS A SCREEN WEST AND LANE PRODUCTION A PREMIERE PICTURE A NETFLIX PRODUCTION A MARGARET LEWIS PRODUCTION A DEBORAH KATZ FILM "THE TRUTH"

DAVE THWAIT MARK WOOTTON JASON WATKINS JONNA PAGE *as* JESSICA PINE *as* PAUL FERRE

JOHN RACHEL RECK, JOHN DE WINTER, NICKY KATZ, JESSIE SITT, STEVE KING, STEPHANIE COLLE, NATHANIEL DODD, CHRIS MOORE, MICHAEL WINTER, SEAN VAN HALBE, AND NICKY SEJA DINE

© 2007 NCS GROUP INC. ALL RIGHTS RESERVED. NCS GROUP INC. IS A REGISTERED SERVICE MARK OF NCS GROUP INC. IN THE U.S. AND OTHER COUNTRIES. NCS GROUP INC. IS NOT RESPONSIBLE FOR ANY CONTENTS OR OPINIONS EXPRESSED HEREIN.

© 2004 Blackwell Publishing Ltd *Journal of Internal Medicine* 255: 111–118

SUN 1ST DECEMBER

SUN 1ST DECEMBER

10:30AM

10.30AM

DISCUSSION 5E (51E FULL)

COMMISSION £5 (£15 FAM

.....



SUN 1ST DECEMBER

10:30AM

ADMISSION £5 (£15 FAMILY)

Gardening group

What a wonderful summer we have been experiencing, and hopefully everyone in Midmar has been enjoying their gardens. Certainly with lots of sunshine, and only the occasional appearance of the rain the plants have all been thriving – of course the weeds don't stop growing either!!

We had a very happy afternoon with our friends from Forrit Brae at the beginning of July. Five residents of that part of the world drove to the hall and met our group there. Not a wonderful afternoon so far as the weather was concerned, but it didn't rain. They were delighted with the hall garden and thanks to the colossal efforts of Margaret and Gordon Chapman it looked very attractive indeed.

Then we all visited the Chapman's garden which looked beautiful, ablaze with colour, and such interesting nooks, crannies and peaceful pond. Then we all enjoyed the McRobb's and Stokoe's gardens, and the Forrit Brae group were most interested in the history of that part of Midmar. John Darbyshire showed everyone his arboretum and it was amazing to see so many trees, all different, growing in his extensive garden. We finished at Littlehill, and everyone agreed it had been a happy time with the friendships within the two groups enjoyed by all.

Our June meeting saw us at Fyvie Castle gardens where the young head gardener, Gordon Thomson, showed us around his "plot" – acres and acres of interesting plants and layouts. We finished that meeting with a meal at the Grant Arms at Monymusk. We have no meetings in August but the first Wednesday in September, we have the head gardener from Drum Castle coming to Midmar. We hope to have good discussion with a question and answer type of meeting.

October we are visiting Daluaine, the garden of Mrs. Chrichton Maitland at Rhynie. We have visited this garden twice before, but never in the Autumn, so we shall see the trees, plants etc. at a very different stage in the calendar year. That takes us up to our AGM in November and the planning of our Christmas meal in December.

We are a small group, but very enthusiastic and would be delighted to welcome new members in 2014.



100 Club Draw

The 2013-14 100 Club is underway with there already being £180 paid out in prize money over the last 3 months.

The August draw took place at the last Hall Committee meeting and the winners were Bert Wilson, Jackie Randell and Pat Baxter.

If you wish to be part of the September draw, please contact Pamela Black at info@midmarhall.com for your chance to be one of our winners.

Midmar's new arrivals

Here is the new addition to the Backwell family, Emily Margaret Rose, seen on the right with Mum Sarah and Dad, Richard .

Below Emily makes up the four generations with great grandparents Etta and Billy and grandparents Colette and Louis.

Emily arrived on the 17th June weighing 7lb 11oz.

Congratulations to all the family.



Midmar's puppy pals

Here is Freya, she is a short haired German pointer and lives with the Harrison's in Marionburgh. how cute is that face?!



Midmar School News

Summer Successes

Midmar School pupils enjoyed successes at Echt Show in July and Echt Flower Show in August. Our display, 'Poultry, its place in Food and Farming' was awarded first prize. The children had put a lot of work into their display, collecting photos of their own hens, researching and writing about poultry breeds, writing about the dietary benefits of eating eggs and poultry and creating a recipe book.

Children also entered a number of sections at the Echt Flower Show with many prizes coming back to Midmar. Well done!



Chloe, Beth and Christina show of the Duck Duck Goose recipe book

Golden Jubilee

The present Midmar School building was opened to pupils in August 1963 with the official Opening being held on 14th November 1963. We are organising an Open Afternoon with teas and a short concert on Saturday 16th November 2013, from 1.00pm – 4.00pm. We would like as many of the community to come along as possible. Look out for more information in the Community and coming through your door in the near future!

Calling all past pupils

Did you attend the old Midmar School or the new school? Do you have any photographs from your school days? Do you have any other memorabilia, memories or stories you may wish to share? We would like to hear from you. Please contact Primary 5, 6 or 7 pupils, Mrs Shepherd or Mrs Ledingham.

A bountiful year

The school garden has been very successful this year, producing excellent crops of potatoes, onions, turnips, rhubarb, blackcurrants, gooseberries and strawberries. Our stall at the Church Coffee Morning was laden! We used the blackcurrants to make jelly and the strawberries to make jam. The rhubarb was made in crumbles. Children also enjoyed baking rock cakes, chocolate krispies, chocolate brownies, nutty meringues and peppermint creams.



Selling our wares



All change! The landscape around the school continues to change with a new car park, extension and the wood being felled. Children enjoyed learning about the forestry business from Andrew Nicol and saw how the harvester works.



You can find more information on our website at Midmarhall.com

Midmar events a



Aberdeen Traditional Music & Song

12th October
7.30pm - 10.30pm
Midmar Hall

**Ticket Price £8
(£6 Concessions)**

Contact Shirley Watts
01224 314795

The ever popular... **Garioch Blend**

20th October
2pm

Midmar Hall

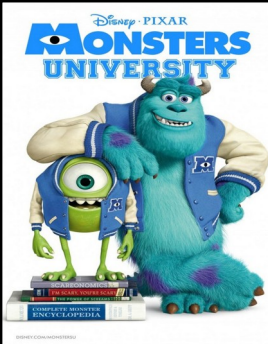
Ticket Price £9
Contact Bert Wilson
01330 833228

Day	Activity	Location
Monday	Rising 5's (for our pre-school children)	Midmar School
	Book Club (Last Monday of the month)	Various
Tuesday	Playgroup	Village Hall
	Toddlers	Village Hall
	Musicmakers (under5's music Class)	Village Hall
	After School Club	Midmar School
	Upholstery Classes	The Little
	Bowling (October through to March)	Village Hall
Wednesday	After School Club	Midmar School
	Brownies	Village Hall
	SWRI (2nd Wednesday of the month)	Village Hall
	Gardening Club (1st Wed of the month)	Village Hall
	Whist (4th Wednesday of the month)	Millbank Bo Club Hut
	Playgroup & Toddlers	Village Hall
	Toddlers	Village Hall
Thursday	Mobile Library (fortnightly)	Hall car pa
	Upholstery Classes	The Little
	After School Club	Midmar School
	Singing Group	Village Hall
Friday	Community Cafe (1st Friday of the month)	Village Hall
	Sewing Classes	The Little

t a glance

Midmar School 's **Golden Jubilee** Open Afternoon
Saturday 16th Nov 2013, 1.00pm – 4.00pm.

ion	Time	Further Information
chool	10am -12pm	Barbara Harrison 860421
	8pm -10pm	Alistair McRobb 833715
ll	9.30am -11.30am	Pamela Black 833682
ll	9.30am -11.30am	Laura Wade 833810
ll	9am - 9.30am	Louise Hunter 830061
chool	3.15pm - 6pm	MASC - 07503 670 454
Byre	7pm - 9pm	Kay Savoury 833515
ll	7.15pm - 9.15pm	Alan Blackie 833482
chool	3.15pm - 6pm	MASC - 07503 670 454
ll	6pm -7.30pm	Colleen Moir 833680
ll	7.30pm -9.30pm	Judith Stokoe 833719
ll	7.30pm	Phyllis Baird 833586
owling	7.30pm -10pm	Isabel Birse 833209 First whist 25th September 2013
ll	9.30am -11.30am	Pamela Black 833682
ll	9.30am -11.30am	Laura Wade 833810
ark	9.45am - 10am	
Byre	10.30am-12.30pm & 1pm - 3pm	Kay Hourston 833515
chool	3.15pm - 6pm	MASC - 07503 670 454
ll	7.30pm - 8.30pm	Louise Hunter 830061
ll	10am - 12pm	Next dates 5th October, 1st Nov, 6th Dec
Byre	10am – 12pm	Kay Hourston 833515



Disney • PIXAR
MONSTERS UNIVERSITY

SUN 3RD NOVEMBER
10:30AM
ADMISSION £5 (£15 FAMILY)




SAVE THE DATE!
CHRISTMAS CRAFT FAIR

15th Nov 7pm - 9pm

Classical Concert
30th Nov
7.30pm

Contact Jonathan Wilson
833910 for tickets



Nativity! 2

SUN 1ST DECEMBER
10:30AM
ADMISSION £5 (£15 FAMILY)

The Cottage Bar – The Midmar Inn (5)

Hello again, as we mentioned in our last article about the pub, (6 months ago now!), we were just getting started on the work to re-apply for a Community Right to Buy (CRtB) of the Midmar Inn. For me, this being the first time I have been involved, it has been a very interesting experience because the whole process is very fair to all parties, at the end of the day the Scottish Ministers make their decision quite dispassionately on the evidence as it is presented.

As you can imagine, since we lodged the re-application in late June, (with just 1 week to spare!), we have all been wondering what the outcome would be and last week we received a letter that we are pleased to report confirmed that the decision has been made to up-hold the CRtB in favour of the FoMICC and Midmar community.



Thank you to everyone who contributed, there were lots of people involved in collating and drafting what we submitted and when we performed our survey, although some people abstained or were against, over 76% of the people on the electoral role in the area near to the pub gave the initiative the thumbs up. We also had positive replies from several others too who filled in the information on the back of the flyer that we put round about the last Pub Night at the Hall.

The judgement has been made on the basis of a whole variety of reasons which we have summarised below and we also look to explain how the CRtB process works so that it is fair to all. If anybody wants to follow through independently on the detail, please contact us directly or lookup information on line, the Case Number is CB00092.

In addition to describing in law, long held rights such as “the Right to Roam”, The Land Reform (Scotland) Act 2003 provides opportunities for rural communities to take control of, and develop land and buildings with which the local community has a connection. The Midmar Inn is a proven case in point since for over 200 years it has been a social meeting place and more latterly a recognised Public House, available for use by all the community.

The Scottish Ministers judgement makes it very clear that it is up to the owners to decide when to sell: the CRtB is not a mechanism to make the owners sell: it requires a willing seller and is not a forced sale of land. The CRtB does not stop the owners from selling the Inn: all CRtB does is to give FoMICC a pre-emptive right to buy the Midmar Inn when the owners put it on the market and to achieve this FoMICC has had to demonstrate that what is proposed is in the economic and social interests of the local community of Midmar.

As to the price to be paid, should the Midmar Inn be placed on the market by the owners, the Scottish Ministers will appoint an independent valuer who will assess the worth of the land and buildings at “market value”. The procedures to be followed in undertaking the

valuation are set out in legislation and the owners of the Inn will be able to provide written representations about its value and all this **must** be taken into consideration. For FoMICC this process is important because it will make the renovation project eligible for funding awards up to the independent valuation value.

It is not the intention of the CRtB legislation that the owners should sell their land and buildings at a loss or that a community body buys them cheaply. The price to be paid is reached by mutual agreement between the owners and community body; this is aided by the "market value" as determined by the independent valuer and/or at a price set by the Lands Tribunal. The FoMICC wants to pay a fair value for the Midmar Inn.

The CRtB process does not stop the owners of the Midmar Inn from developing their land and buildings in any way, if they wish to develop it for private housing or purposes other than its current approved use, this is a subject for a planning application. The CRtB and the Planning Processes are entirely separate matters. For example decisions with regard to change of use for any property from being a Public Amenity, as the Midmar Inn is now, are dealt with by the planning authority.

The CRtB remains in force for 5 years and can be renewed indefinitely however if the owner were to put the Midmar Inn on the market then the CRtB process would commence and, assuming we agree a price, there would then be 6 months to raise the money. If we fail to achieve that target, the CRtB is revoked and the process is finished.

What FoMICC hopes will happen next is that the Midmar Inn will now be put on the market and an amicable sale agreed. If we are successful, the residents of Midmar, visiting food and ale enthusiasts and tourists to Aberdeenshire, will be able to enjoy the pleasures of a vibrant, community active business and meeting place called the Midmar Inn. It could easily become the greatest experience in the whole of the Shire!



This article has been submitted by Rob Ferguson other information and contact details can be found on our website www.savethemidmarinn.co.uk.

If you wish to comment or provide feedback on the content of this article then my direct contact details are 01330-830038

Walk up an Appetite (9)

After I published my last walk (Sun Honey to Raemoir), Andy Baxter telephoned me to ask if I knew about a path connecting the shooting access road on top of the Hill of Fayre to the main forestry road in the forest lying further west than the route that I had described. I was intrigued, because although I have tried this a couple of times I have never found a satisfactory route to get up to the top of the hill from the Queens Seat. Andy promised me that there is a route, which he has cleared over the last few years, primarily to access the Hill of Fayre from the Midmar side with his mountain bike

So a couple of weeks ago Andy and I went out together and we walked west from Sun Honey car park, up through the trees via Queens Seat, to the top of the Hill of Fayre and then east along the top to come back down to where we had started. It took us a while because Andy was fully equipped with his saw and loppers so that we could remove the occasional branch and make the path more obvious for others to follow. Most people will probably manage the route in about 3 hours, it is about 6 miles over mixed ground, tracks and forest paths so wear sturdy footwear and take an OS map.

This walk is also a tribute to Andy and his extendable "loppers", what an amazing job they have done, watch out as you follow the path through the trees to the top wall, you will see evidence everywhere of low branches removed and wind-blow cut to make a free passage. Before we set off, he was putting the tools in his bag, I have to admit I did have sceptical thoughts but now I am converted and will be doing the same whenever I go out !!



- 1) Park in the Forestry Commission car park at Sun Honey and set off west, uphill from the car park following the main forestry road.
- 2) Quite quickly you reach a point where the track divides, take the right hand fork (E) down the less significant track. Follow this for quite some distance.
- 3) After about a mile you pass an old sand quarry on your left.
- 4) Shortly after the sand quarry the track bends sharply right (ignore the route ahead) and you will cross Gormack Burn using a substantial flat bridge. On the west side of the bridge cross the wide cleared area and continue walking following the grassy passage between the trees west.

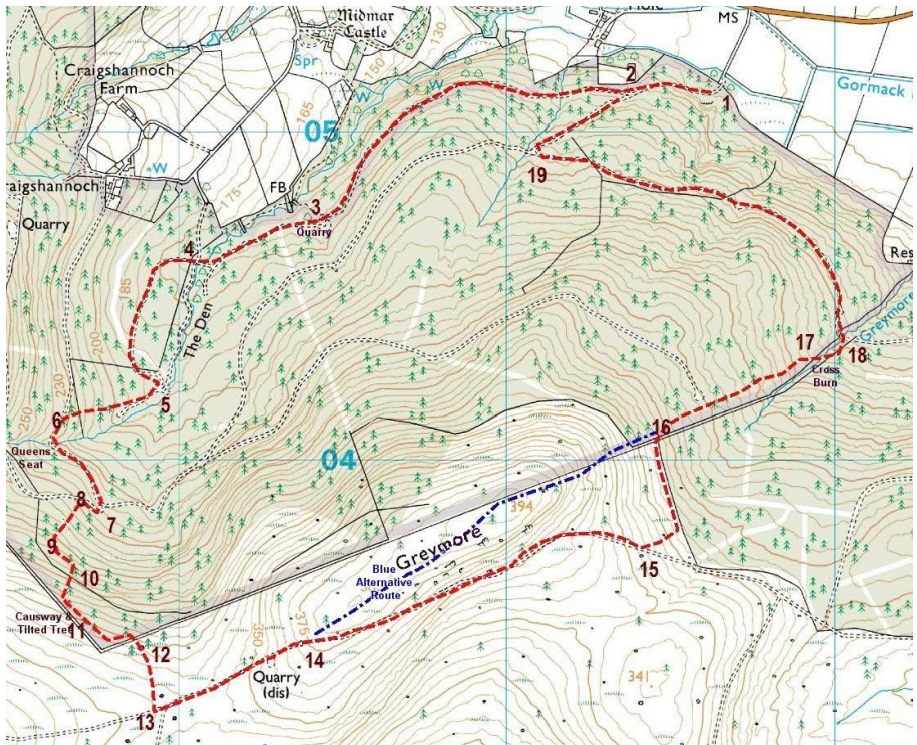
After a few yards the route bend slowly south through 90 degrees and you will be walking slightly up hill. As the slope to your west becomes steeper do not be tempted to turn off the track, up the contour and into the trees, but continue following the more level path. At this point you will be travelling east again for a few yards with trees on both sides.

- 5) At Gormack Burn, now turn right (WSW) and follow the obvious path uphill between the mature coniferous trees until you reach a forestry road.
- 6) If walking this route as it is described, (anti-clockwise), this junction is easy, just turn left (S), cross Gormack Burn next to Queens Seat from which legend says the Queen (whoever she was) watched a battle that was taking place on Barmekin Hill. Certainly the Barmekin would be visible from that position before the forest had grown up as it has today and I would be interested to know some more of the history, I tried doing a Google

search on a few keywords but come up with nothing conclusive.

Note: for those of you walking the route clockwise, the path entrance off the forestry road is not clear, look for it on the east side, soon after crossing Gormack Burn at Queens Seat (approx. 100yds).

- 7) When the forestry road that you are on meets what Andy calls the “A1” forestry road through Midmar Forest turn sharp right (NW) and walk for what I counted as exactly **83** steps, at this point the “A1” is curving gradually from NW to W.
- 8) To your left (SW), on the inside of the curve of the “A1” is where Andy’s path starts. The OS map reference is NJ 69700 03850. The path entrance is not very clear but it is there, effectively just strike straight up the contour and you will find the route.
- 9) Climb until your way ahead is blocked by fallen trees and then turn sharp left (SE) when



you will find a clear path that is tracking around the contour. As you go you will see plenty of evidence of Andy’s work to maintain this route and indeed we did some more while we were there, removing some small branches that had come down.

- 10) Continue until the path starts to peter out and becomes wet underfoot because a small stream is coming down the hill at this point. Do not cross the stream but turn right (SWS) up the slope again. To make the climb a little easier Andy has chosen a zigzag route through the trees and marked several of the turns by laying branches occasionally parallel to the path that you should take.
- 11) As you reach the boundary wall turn left (SE), so the ascent becomes less steep, and follow the wall on the forest side, you will cross a stream, on Andy’s Causway, where there is a tilted tree. Continue following the wall, keeping it a few yards away on your

Right, the wall itself then turns sharp left, but you should continue ahead until you almost come up to it before also turning left (SE). Follow close to the wall (on the forest side), downslope heading NE, for about 50 yards more.

- 12) On the moor, close to the wall, you will see an obvious pair of pine trees and a place to cross into the heather by walking between these trees. Head SES following the line between the short and long heather towards the Shooting Access Track that runs the length of the Hill of Fayre, we thought that we might call this "M1" from now on!
- 13) You will join the "M1" marked by two small piles of stones which are close to the junction that heads south to Raemoir. Turn left and walk NE.
- 14) As you walk along the road, at the point where it first dips down slope and a steeper slope with broken rock and trees appears on your left, there is an "Alternative Route" (blue on map) to leave the "M1" and ascend Greymore. On a clear day this is worth doing because of the view from the top back over Midmar. On the top the walking is easy, however the descent on the east side is steep and lumpy with deep heather until you re-join the main route in the trees.
- 15) If you do not take the alternative option then proceed for some distance on the "M1" and then as you are walking downhill and approaching a point where the estate wall starts to come very close, strike left (NE) across the scrubby heather to meet the estate wall and then turn left again (NW) to follow it until you reach a wall junction, with a stone stile, where you can easily cross back into Midmar forest.
- 16) After crossing the stile turn right (NE) and walk downslope keeping the wall in sight to your right.
- 17) As the trees begin to end angle slightly right (ENE) to avoid the lumpy open ground ahead and cross Greymore Burn, this is not difficult because at this point the stream is actually very narrow in its wide channel.

On the east side of the burn continue down slope again following a forest machine track until it becomes deeply rutted and awkward to walk in.

- 18) At this point, to the right of the machine track there are two massive fallen trees with their root boles facing you. Walk between the root boles and then cross the left hand tree trunk easily because at this point Andy got his tools out again and we quickly dispatched all the prickly branches that were blocking the way. Magic!

If you do not find this cleared way it does not really matter because a few more yards further down the slope you re-join the "A1" forestry road close to the Cowdray and Midmar estate boundary on the east side of Greymore Burn.

It may look narrow at this point but turn left (NWN) and push through the close growing trees and muddy patch (above the burn) to walk out NW along the "A1" for just over a mile.

- 19) When you come to a substantial forest road junction, turn right (NE) downslope to walk back down to Sun Honey car park.

Our route map is not scaled so take OS Landranger Map 38, with you for additional reference information. The total area is enclosed by Eastings NO69 to NJ72 and Northings NJ03 to NJ06.

Article by Rob Ferguson : if you have comments/feedback on the content my contact details are Tel 01330-830038 or eMail rob.ferguson@aiexps.co.uk.



NIALLPATON

CABINET MAKERS

KITCHENS - FURNITURE ARCHITECTURAL JOINERY

High quality kitchens, interiors
and furniture created to
your requirements.

PLYFOLD, ORDHEAD,
ABERDEENSHIRE AB51 7QX

T: 01330 833953

WWW.NIALLPATON.CO.UK

Calling all budding young entrepreneurs!

Whatever business idea you might have why not progress it by talking it over with The Prince's Trust - a charitable organisation which helps support and mentor young people. Its Youth Business Scotland Programme provides advice and assistance for young people aged 18 to 30* who are looking to start up their own business.

Through the programme we discuss business ideas with nearly 3000 young people in Scotland every year of which 600 – 650 go on to receive funding support. We can offer a Will it Work grant of up to £250 to test your business idea and if needed we can also provide low interest loans of £500 to £5000. The service is free and confidential and for businesses started through the programme there is a minimum of two years on-going mentoring support to guide you through the early years.

If you have a business idea or a trade - be it hairdressing or contracting, beauty or joinery which you would like to develop then why don't you get in touch. You can reach me by email on Samantha.leys@princes-trust.org.uk or by calling me on 01224 289709.

I look forward to hearing from you soon. Samantha Leys, Regional Manager
Grampian, The Prince's Trust Youth Business Scotland

*those aged between 26 and 30 must be unemployed or working less than 16 hours a week.

Or if you'd like to know more very informally, Marion Miller is a volunteer with the P.T.Y.B.S. and can be contacted on 01330 830140

Foot Care

Kevin Cole BSc (Hons), DPodM., MChS.
Podiatrist (HPC Registered)

We provide expert care, diagnosis and treatment of ankle and foot disorders for children and adults.

- . Routine Foot Care . Minor Surgery.
- . Sports Injuries . Biomechanics.
- . Insoles / Orthotics.

Inverurie Physiotherapist Clinic
Midmill Industrial Estate, Kintore
AB51 0TG

Tel: (01467) 633444

www.kevincolepodiatry.co.uk



Vital Veg

We grow over 100 different varieties of great tasting, chemical-free veg in Midmar!

We don't supply supermarkets. We only sell to real people like you.

To have a veg box delivered to your home:

www.vitalveg.co.uk

Tel: 01330 833 823

wendy@vitalveg.co.uk

NIALLPATON

CABINET MAKERS LTD

Require:

Cabinet Maker

Please send full CV to:

Neil Paton, Plyfold, Ordhead,
Aberdeenshire AB51 7QX
or info@niallpaton.co.uk

AUCHORRIE FRESH FARM TURKEYS



For Christmas or New Year

Tel: 01330 833686 or
01330 833461

Sponsor the newsletter

If you would like to sponsor the newsletter prices are:

£10 for a business card size

£30 for a half page

£40 for a whole page in B&W

£60 for a whole page in colour

Please email Amanda at:

Midmar.newsletter@hotmail.co.uk

For any comments and queries regarding articles within the newsletter, please contact the writer as the Hall Committee does not take responsibility for content and accuracy of articles.

Closing date for submissions to the December newsletter (which covers events December, January and February) is the 10th November.

Please email

midmar.newsletter@hotmail.co.uk

Thank you, Amanda

www.baileystaxis.co.uk



Baileys taxis

Taxi from your local loon!!!

07533998969

Iain Bailey

info@baileystaxis.co.uk

Kemnay
Inverurie



- CIVIL EARTHWORKS CONTRACTORS •
- CIVIL ENGINEERING & GROUNDWORKS CONTRACTORS •
- CRUSHING & SCREENING CONTRACTORS •
- PLANT HIRERS •
- DEMOLITION CONTRACTORS •
- HAULAGE CONTRACTORS •
- QUARRY & RECYCLED MATERIALS SUPPLIERS •

Tel: 01330 830033

Fax: 01330 830044

Email: info@millerplant.com Web:
www.millerplant.com

North Lurg, Midmar, Inverurie, Aberdeenshire,
AB51 7NB

Beauty at Eden

Waxing ~ hot stone massage
Eyebrow treatments ~ Nails manicured
Minx nails ~ Facials ~ Make-up
Massage ~ Reiki ~ Pamper Parties

To make an appointment or for any further
information please call Jane on: **0751 0099 239**
12 Bennachie Gardens, Sauchen, AB51 7JG

Monymusk Thrift Shop

Opening times
Thursday & Friday
mornings 9:15am -
12:15pm

Location
The village Post Office
in the Square.

As well as our second-
hand stock we serve tea,
coffee and fresh home
baking.

The money raised goes
towards the on-going
village hall
improvements and other
charitable causes.



Find us on
Facebook

Did you know that Midmar Hall
has its own Facebook page
with over 260 friends?

Check out our site and become
our friend today. There are
great photos of Midmar,
information on events,
residents having their say and
Village Hall updates. It's there
for you so add whatever you
would like to see or hear about.

Together we can share what's
happening around the
community on a daily basis.
Join today and stay informed.
Just enter 'Midmar Hall' in the
facebook search engine .

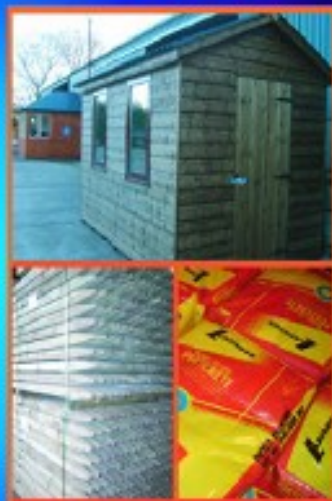
www.midmartimbercentre.co.uk

MIDMAR TIMBER CENTRE

Smiddy Croft, Comers Road, Midmar, AB51 7PS

TIMBER PRODUCTS & BUILDING TIMBER

- FENCING & POSTCRETE
- GARDEN BARK
- SHEET MATERIALS
- DECKING
- CHIPBOARD FLOORING
- PLYWOOD
- PLASTERBOARD
- WEATHERBOARDING
- INSULATION
- PALLETS, CRATES & BOXES
- ROOFING FELT



GARDEN SHEDS, SHELTERS, MOBILE FIELD SHELTERS

- Timber cut to size • Competitive prices • Delivery available •



info@midmartimbercentre.co.uk

Tel/Fax: 01330 833581